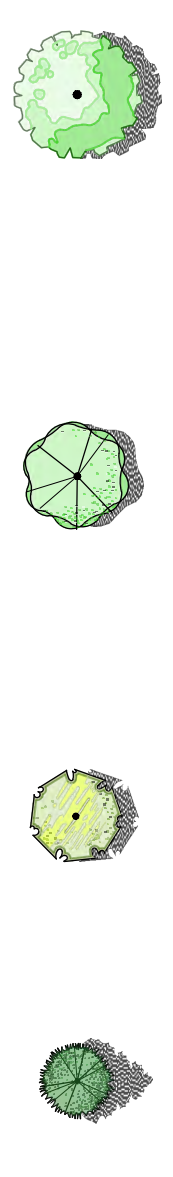




NOTE: ALL UTILITY LOCATIONS HAVE BEEN PROVIDED BY THE RESPECTIVE UTILITY DEPARTMENTS OR COMPANIES. CONTRACTORS ARE RESPONSIBLE FOR ANY DAMAGE TO UTILITIES. CALL UTILITY COMPANY OR CITY DEPARTMENTS FOR GROUND LOCATIONS BEFORE DIGGING.

PUBLIC SPACE LANDSCAPE CHARACTER & INTENT
 PUBLIC LANDSCAPE AREAS SHALL PROMOTE FORMAL LANDSCAPE PRINCIPALS OF SYMMETRY AND BALANCE.
 PLANTS LOCATED WITHIN PUBLIC AREAS SHOULD BE PRIMARILY WHITE IF FLOWERING.

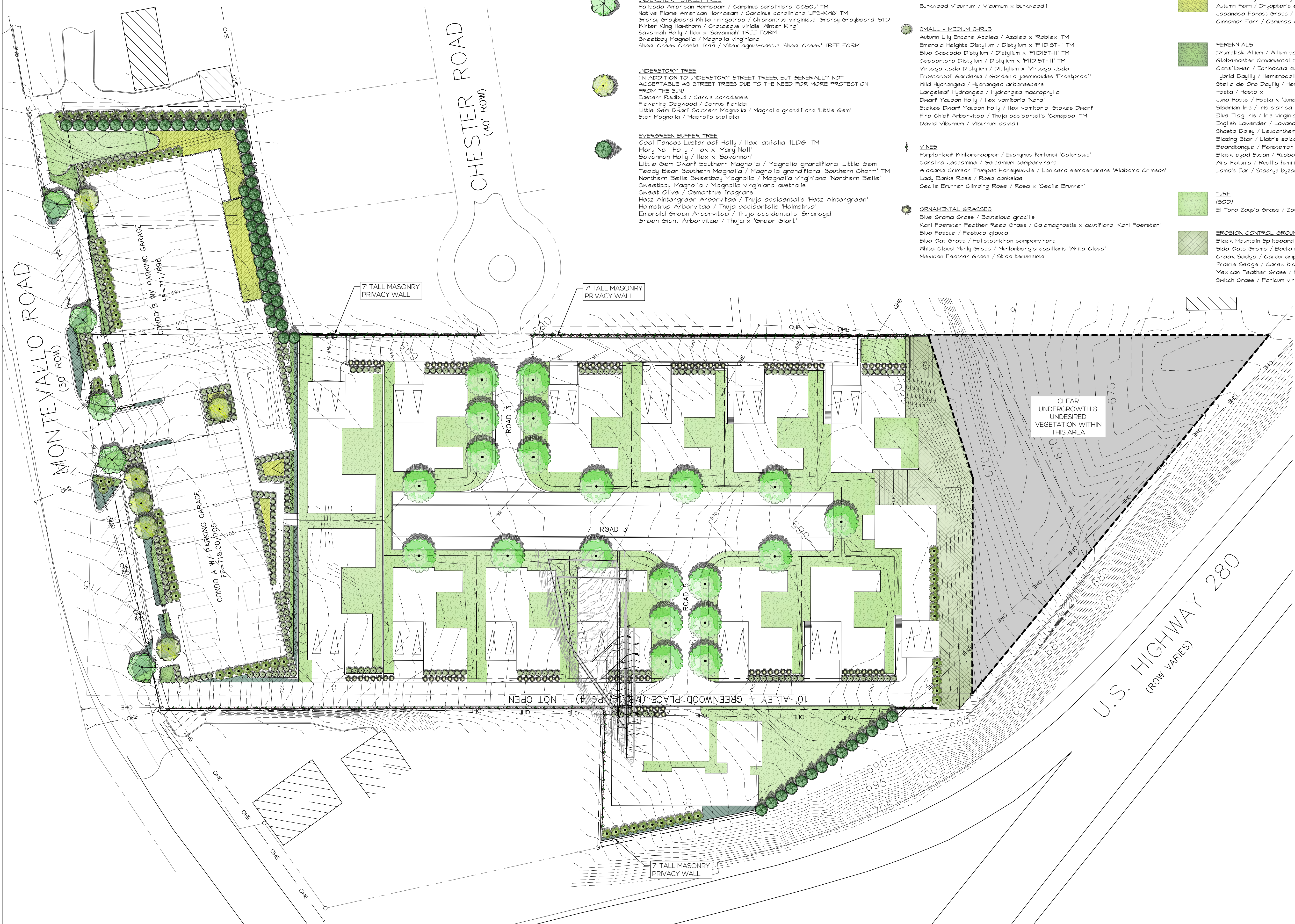
CONCEPT PLANT SCHEDULE



- CANOPY TREE**
 Palmetto Dawn Redwood / *Metasequoia glyptostroboides* '1042' TM
 Arrowhead Dawn Redwood / *Metasequoia glyptostroboides* 'Arrowhead'
 White Oak / *Quercus alba*
 Northern Red Oak / *Quercus borealis*
 Highbeam Overcup Oak / *Quercus lyrata* 'GLFTB' TM
 Nitid Oak / *Quercus nitida*
 Shumard Oak / *Quercus shumardii*
 American Linden / *Tilia americana*
 Littleleaf Linden / *Tilia cordata*
 Jefferson American Elm / *Ulmus americana* 'Jefferson'
 Creole Queen American Elm / *Ulmus americana* 'VASNZ' TM
 Lacebark Elm / *Ulmus parvifolia*
- UNDERSTORY STREET TREE**
 Palmetto American Hornbeam / *Carpinus caroliniana* 'CC80U' TM
 Native Flame American Hornbeam / *Carpinus caroliniana* 'IFS-KIN6' TM
 Grassy Graybeard White Fringetree / *Gonolobus virginicus* 'Grassy Graybeard' STD
 Winter King Hawthorn / *Crataegus viridis* 'Winter King'
 Savannah Holly / *Ilex x 'Savannah'* TREE FORM
 Sweetbay Magnolia / *Magnolia virginiana*
 Shoal Creek Ghost Tree / *Vitex agnus-castus* 'Shoal Creek' TREE FORM
- UNDERSTORY TREE**
 (IN ADDITION TO UNDERSTORY STREET TREES, BUT GENERALLY NOT ACCEPTABLE AS STREET TREES DUE TO THE NEED FOR MORE PROTECTION FROM THE SUN)
 Eastern Redbud / *Cercis canadensis*
 Flowering Dogwood / *Cornus florida*
 Little Gem Dwarf Southern Magnolia / *Magnolia grandiflora* 'Little Gem'
 Star Magnolia / *Magnolia stellata*
- EVERGREEN BUFFER TREE**
 Cool Flames Lusterleaf Holly / *Ilex latifolia* 'ILD6' TM
 Mary Nell Holly / *Ilex x 'Mary Nell'*
 Savannah Holly / *Ilex x 'Savannah'*
 Little Gem Dwarf Southern Magnolia / *Magnolia grandiflora* 'Little Gem'
 Teddy Bear Southern Magnolia / *Magnolia grandiflora* 'Southern Charm' TM
 Northern Belle Sweetbay Magnolia / *Magnolia virginiana* 'Northern Belle'
 Sweetbay Magnolia / *Magnolia virginiana* 'australis'
 Sweet Olive / *Osmanthus fragrans*
 Hetz Wintergreen Arborvitae / *Thuja occidentalis* 'Hetz Wintergreen'
 Holmstrup Arborvitae / *Thuja occidentalis* 'Holmstrup'
 Emerald Green Arborvitae / *Thuja occidentalis* 'Smaragd'
 Green Giant Arborvitae / *Thuja x 'Green Giant'*
- MEDIUM - LARGE SHRUBS**
 Camellia / *Camellia japonica*
 Sasanqua Camellia / *Camellia sasanqua*
 Red Twig Dogwood / *Cornus sericea*
 Sunrise Forsythia / *Forsythia ovata* 'Sunrise'
 Border Forsythia / *Forsythia x intersmedia*
 Oakleaf Hydrangea / *Hydrangea quercifolia*
 Dwarf Burford Holly / *Ilex cornuta* 'Burfordii Nana'
 Schipka English Laurel / *Prunus laurocerasus* 'Schipkaensis'
 Reeves Spiraea / *Spiraea cantoniensis*
 Holmstrup Arborvitae / *Thuja occidentalis* 'Holmstrup'
 Emerald Green Arborvitae / *Thuja occidentalis* 'Smaragd'
 Viburnum / *Viburnum dentatum*
 Burkwood Viburnum / *Viburnum x burkwoodii*
- SMALL - MEDIUM SHRUB**
 Autumn Lily Encore Azalea / *Azalea x 'Roblex'* TM
 Emerald Heights Distylium / *Distylium x 'PDDIST-I'* TM
 Blue Cascade Distylium / *Distylium x 'PDDIST-II'* TM
 Coppertone Distylium / *Distylium x 'PDDIST-III'* TM
 Vintage Jade Distylium / *Distylium x 'Vintage Jade'*
 Frostproof Gardenia / *Gardenia jasminoides* 'Frostproof'
 Wild Hydrangea / *Hydrangea arborescens*
 Longleaf Hydrangea / *Hydrangea macrophylla*
 Dwarf Yaupon Holly / *Ilex vomitoria* 'Nana'
 Stokes Dwarf Yaupon Holly / *Ilex vomitoria* 'Stokes Dwarf'
 Lady Banks Rose / *Rosa banksiae*
 Cecile Brunner Climbing Rose / *Rosa x 'Cecile Brunner'*
- VINES**
 Purple-leaf Wintercreeper / *Evonymus fortunei* 'Coloratus'
 Carolina Jessamine / *Gelsemium sempervirens*
 Alabama Crimson Trumpet Honeysuckle / *Lonicera sempervirens* 'Alabama Crimson'
 Lady Banks Rose / *Rosa banksiae*
 Cecile Brunner Climbing Rose / *Rosa x 'Cecile Brunner'*
- ORNAMENTAL GRASSES**
 Blue Grama Grass / *Bouteloua gracilis*
 Karl Foerster Feather Reed Grass / *Calamagrostis x acutiflora* 'Karl Foerster'
 Blue Fescue / *Festuca glauca*
 Blue Oat Grass / *Helictotrichon sempervirens*
 White Cloud Muhly Grass / *Muhlenbergia capillaris* 'White Cloud'
 Mexican Feather Grass / *Stipa tenuissima*

- GROUND COVER**
 Prostrate Glossy Abelia / *Abelia x grandiflora* 'Prostrata'
 Carpet Bugle / *Ajuga reptans*
 Blue Rug Juniper / *Juniperus horizontalis* 'Blue Rug'
 Creeping Phlox / *Phlox subulata*
 Stonecrop / *Sedum album*
 Angelina Sedum / *Sedum rupestris* 'Angelina'
 Large Periwinkle / *Vinca major*
 Common Periwinkle / *Vinca minor*
- SHADE GROUND COVER**
 Common Lady Fern / *Athyrium filix-femina*
 Autumn Fern / *Dryopteris erythrosora*
 Japanese Forest Grass / *Hakonechloa macrocarpa*
 Cinnamon Fern / *Osmunda cinnamomea*
- PERENNIALS**
 Drumstick Allium / *Allium sphaerocephalum*
 Globemaster Ornamental Onion / *Allium x 'Globemaster'*
 Coneflower / *Echinacea purpurea*
 Hybrid Daylily / *Hemerocallis x 'Stella de Oro'*
 Stella de Oro Daylily / *Hemerocallis x 'Stella de Oro'*
 June Hosta / *Hosta x 'June'*
 Siberian Iris / *Iris sibirica*
 Blue Flag Iris / *Iris virginica*
 English Lavender / *Lavandula angustifolia*
 Shasta Daisy / *Leucanthemum x superbum*
 Blazing Star / *Liatris spicata*
 Beardtongue / *Pentstemon digitalis*
 Black-eyed Susan / *Rudbeckia hirta*
 Wild Petunia / *Ruellia humilis*
 Lamb's Ear / *Stachys byzantina*
- TURF (SOD)**
 El Toro Zoysia Grass / *Zoysia japonica* 'El Toro'
- EROSION CONTROL GROUND COVER**
 Black Mountain Spillbeard Bluestem / *Andropogon ternarius* 'Black Mountain'
 Side Oats Grama / *Bouteloua curtipendula*
 Creek Sedge / *Carex amphioxys*
 Prairie Sedge / *Carex blickenilli*
 Mexican Feather Grass / *Nassella tenuissima*
 Switch Grass / *Panicum virgatum*

- INVASIVE & UNDESIRABLE PLANTS**
- TREES**
 Silktree, Mimosa (*Albizia julibrissin*)
 Princess Tree (*Paulownia tomentosa*)
 Bradford Pear (*Pyrus calleryana*)
 Chinese Tallowtree, Popcorn Tree (*Triadaca sebifera*)
 (DUE TO DISEASE)
 Crapemyrtle (*Lagerstroemia*)
 Ash (*Fraxinus*)
 - SHRUBS**
 Thorny Olive (*Elaeagnus pungens*)
 Bush Honeysuckles (*Lonicera maackii*, *Lonicera x bella*)
 Chinese Privet (*Ligustrum sinense*)
 Tropical Soda Apple (*Solanum elaeagnifolium*)
 Kudzu (*Pueraria montana*)
 Japanese Honeysuckle (*Lonicera japonica*)
 Japanese Climbing Fern (*Lygodium japonicum*)
 - GRASSES**
 Cogongrass (*Imperata cylindrica*)
 Japanese stiltgrass (*Microstegium vimineum*)
 Giant Reed (*Arundo donax*)
 - FORBS**
 Chinese or Sericeo Lespedeza (*Lespedeza cuneata*)
 Shrubby or Bicolor Lespedeza (*Lespedeza bicolor*)
 Benghal Dayflower (*Commelina benghalensis*)



Civil Engineering | Land Surveying | Landscape Architecture
 Environmental | Water Resources | Laser Scanning | Modeling

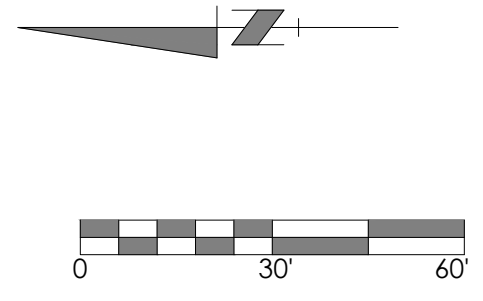
1001 22nd Street South, 7500 Memorial Pkwy SW, Ste 209
 Birmingham, Alabama 35205, Huntsville, Alabama 35892
 205.323.6166 | 256.539.1721
 schadel.com

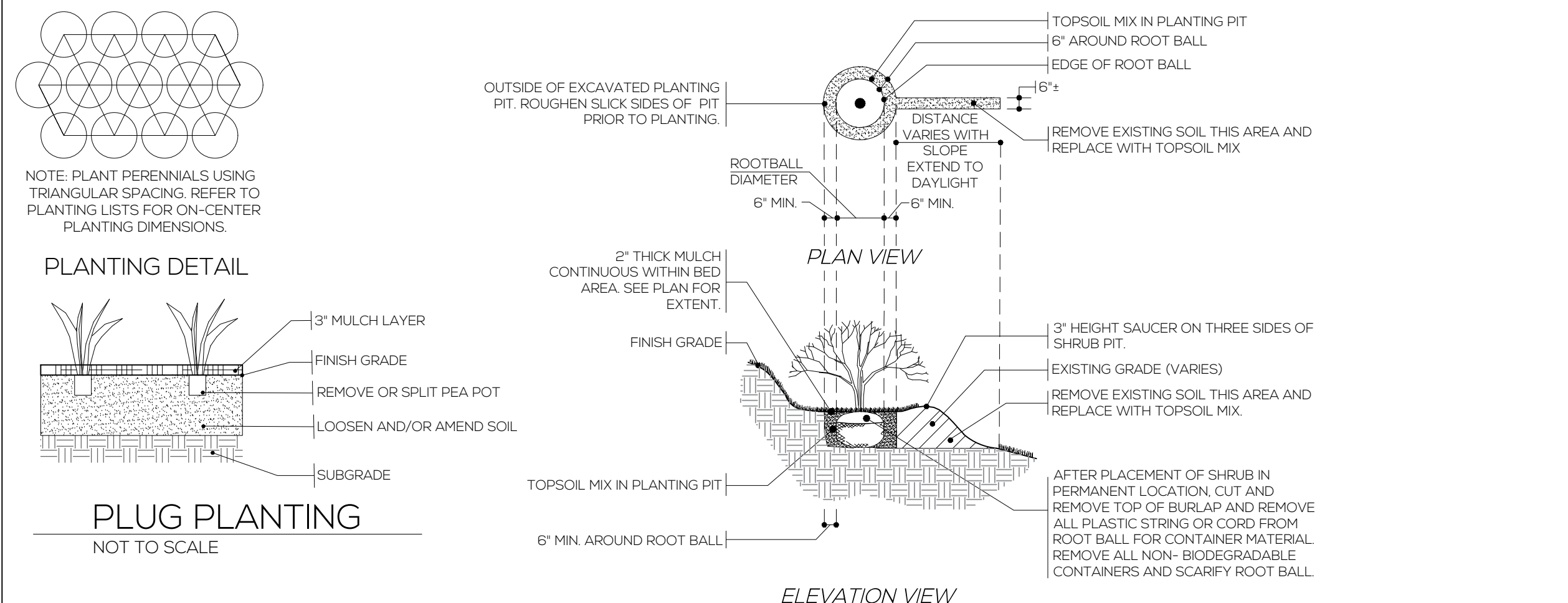
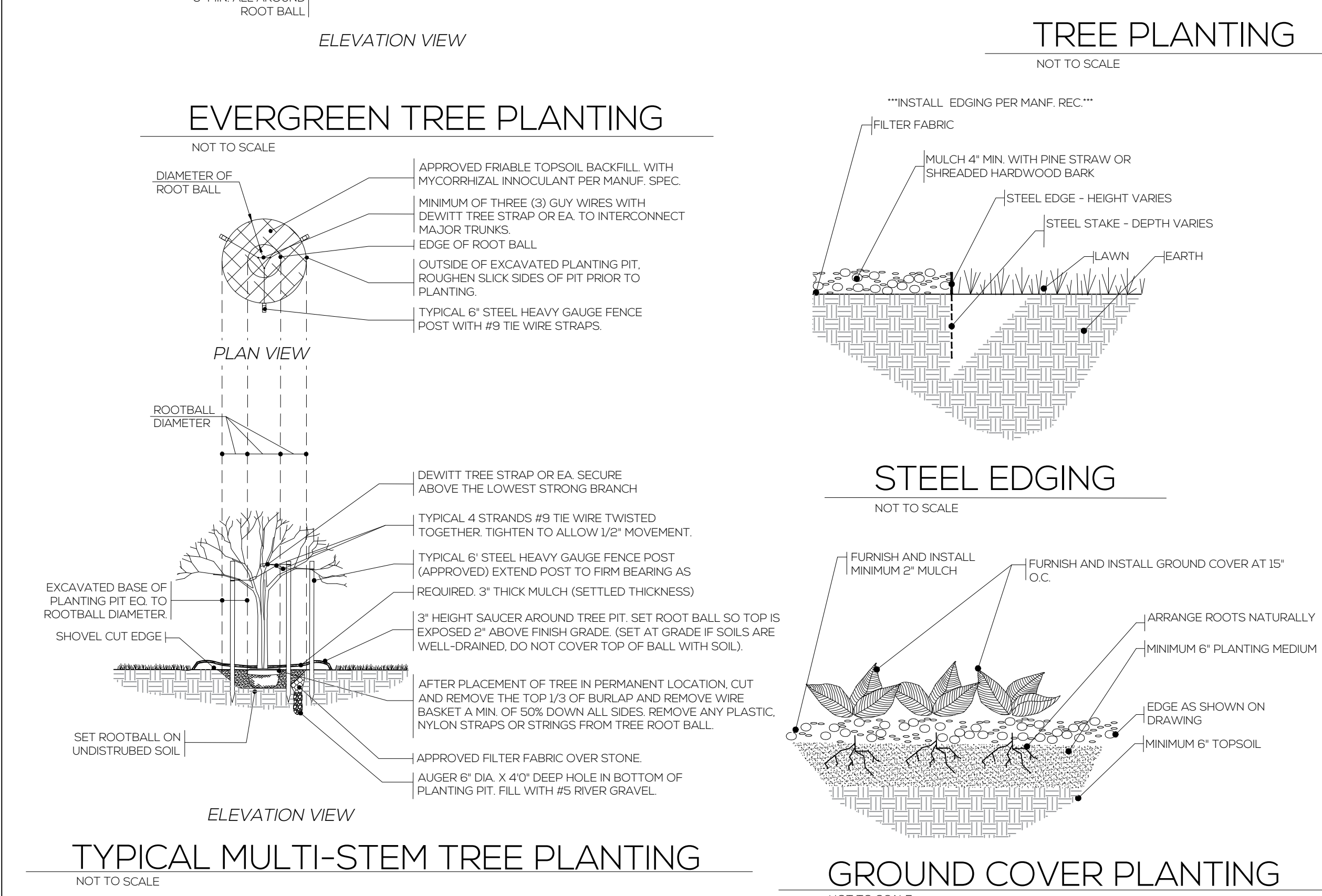
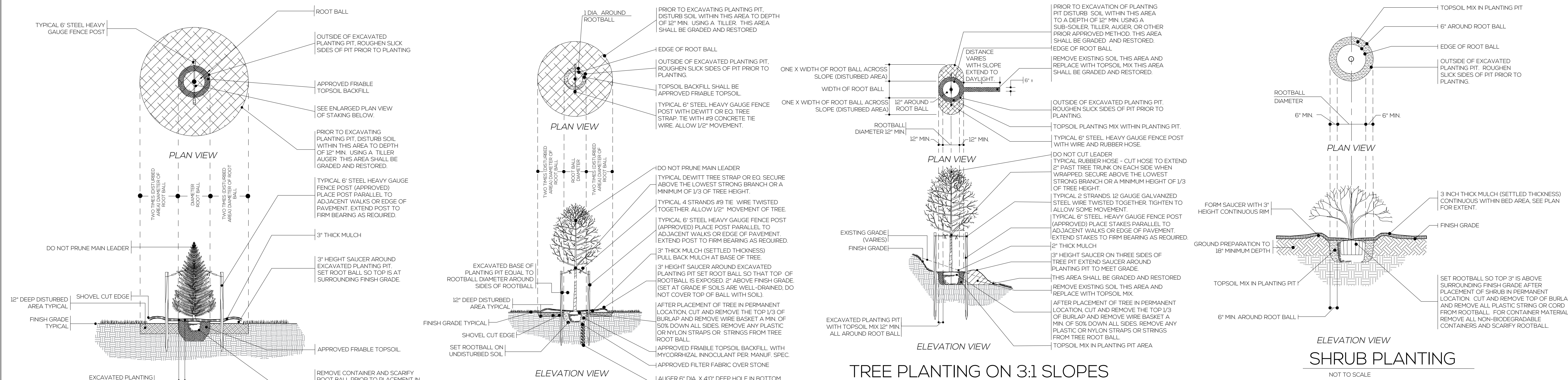
SHADES VALLEY PRESBYTERIAN CHURCH
MOUNTAIN BROOK, ALABAMA
 SITUATED IN THE N.W. 1/4 OF THE S.W. 1/4 OF SECTION 8, TOWNSHIP 18 SOUTH, RANGE 2 WEST
 JEFFERSON COUNTY, ALABAMA

REVISIONS:

ILLUSTRATIVE LANDSCAPE PLAN

DATE: 05.12.2022
 DRAWN BY: A. MITCHELL
 CHECKED BY: C. ORCUTT
 PROJECT NO.: 21576.HO





LANDSCAPE NOTES:

- CONTRACTOR IS RESPONSIBLE FOR THE LOCATION OF UNDERGROUND UTILITIES ON THE SITE. REPAIR DAMAGED UTILITIES TO OWNER'S SATISFACTION AT NO ADDITIONAL COST.
- VERIFY QUANTITIES ON PLANS BEFORE PRICING WORK AND PROVIDE PLANT MATERIAL IN SIZES AND VARIETIES SHOWN ON THE DRAWINGS AND PLANT LIST.
- ALL PLANT MATERIAL SHALL BE GUARANTEED ONE FULL YEAR, FREE REPLACEMENT ON LABOR & MATERIAL. SEPARATE AGREEMENT WITH INSTALLER SHALL BE PROVIDED, TO INCLUDE CONTACT NAME/PHONE NUMBERS.
- SOD ALL AREAS ACCORDING TO LANDSCAPE PLAN AND SEED ALL OTHERS.
- LANDSCAPE ARCHITECT MAY OR MAY NOT AT HIS/HER DISCRETION ACCEPT SUBSTITUTIONS.
- PROVIDE FRESHLY DUG TREES AND SHRUBS. DO NOT USE NATURALLY COLLECTED MATERIALS.
- PLANT MATERIAL STORED ON THE SITE MORE THAN 8 HOURS PRIOR TO PLANTING SHALL BE HEELED IN WITH MULCH AND KEPT MOIST.
- INSTALL ALL PLANT MATERIALS IN ACCORDANCE WITH ALL LOCAL CODES AND ORDINANCES.
- STAKE PLANT LOCATIONS FOR APPROVAL BY LANDSCAPE ARCHITECT BEFORE INSTALLATION. ADJUST STAKE LOCATIONS AS DIRECTED.
- ALL PLANTS SHALL MEET SPECIFICATIONS. ROOTBALLS SHALL MEET OR EXCEED SIZE STANDARDS SET FORTH IN ANSI Z601, 'AMERICAN STANDARD FOR NURSERY STOCK'. MAIN LEADERS OF ALL TREES SHALL REMAIN INTACT.
- MULCH PLANT PITS AND PLANTING BEDS WITH PINE STRAW OR SHREDDED WOOD CHIPS TO A DEPTH OF 3 INCHES.
- PREPARE ALL TOPSOIL TO BE USED IN ALL PLANTING AREAS IN THE FOLLOWING PROPORTIONS:
 4 PARTS TOP SOIL
 2 PARTS DECOMPOSED ORGANIC MATTER
 1 PART APPROVED SOIL AMENDMENT
 1 PART MYCORRHIZAL FUNGI PER MANUFACTURER SPEC'S
- REMOVE FROM SITE ANY PLANT MATERIAL WHICH TURNS BROWN OR DEFOLIATES WITHIN 5 DAYS AFTER PLANTING. REPLACE IMMEDIATELY WITH APPROVED SPECIFIED PLANT MATERIAL.
- WHEN LANDSCAPE WORK IS COMPLETE, LANDSCAPE ARCHITECT WILL, UPON REQUEST MAKE AN INSPECTION TO DETERMINE ACCEPTABILITY.
- MAINTAIN ALL PLANT MATERIAL UNTIL THE JOB IS ACCEPTED IN FULL BY THE LANDSCAPE ARCHITECT UNLESS OTHERWISE SPECIFIED.
- LOCATE PLANT MATERIAL PRIOR TO SUBMITTING BID / OR QUALIFY BID WITH RECOMMENDED PLANT SUBSTITUTIONS. SUBMISSION OF BID SHALL CONSTITUTE CONTRACTOR'S ACCEPTANCE OF PLANT AVAILABILITY.
- ALL TREES WILL BE MULCHED WITH PINE STRAW OR SHREDDED WOOD CHIPS, AND BE STAKED AS SHOWN ON DRAWINGS. STAKES AND GUY WIRE TO BE REMOVED BY AND REMAIN THE PROPERTY OF THE CONTRACTOR.



NOTE: ALL UTILITY LOCATIONS HAVE BEEN PROVIDED BY THE RESPECTIVE UTILITY DEPARTMENTS OR COMPANIES. CONTRACTORS ARE RESPONSIBLE FOR ANY DAMAGE TO UTILITIES. CALL UTILITY COMPANY OR CITY DEPARTMENTS FOR GROUND LOCATIONS BEFORE DIGGING.

SHADES VALLEY PRESBYTERIAN CHURCH
MOUNTAIN BROOK, ALABAMA
 SITUATED IN THE N.W. 1/4 OF THE S.W. 1/4 OF SECTION 8, TOWNSHIP 18 SOUTH, RANGE 2 WEST
 JEFFERSON COUNTY, ALABAMA

REVISIONS:

LANDSCAPE DETAILS

DATE: 05.12.2022
 DRAWN BY: A.MITCHELL
 CHECKED BY: C.ORCUTT
 PROJECT NO.: 21576.HO

Page 116 of 216

SCHUBEL

Civil Engineering | Land Surveying | Landscape Architecture
 Environmental | Water Resources | Laser Scanning | Modeling

1001 22nd Street South 7500 Memorial Pkwy SW, Ste 209
 Birmingham, Alabama 35205 Huntsville, Alabama 35802
 205.323.6166 256.539.1721
 schubel.com