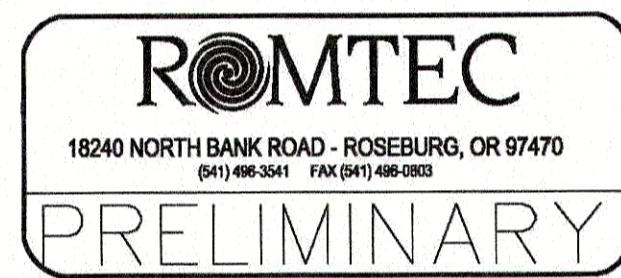
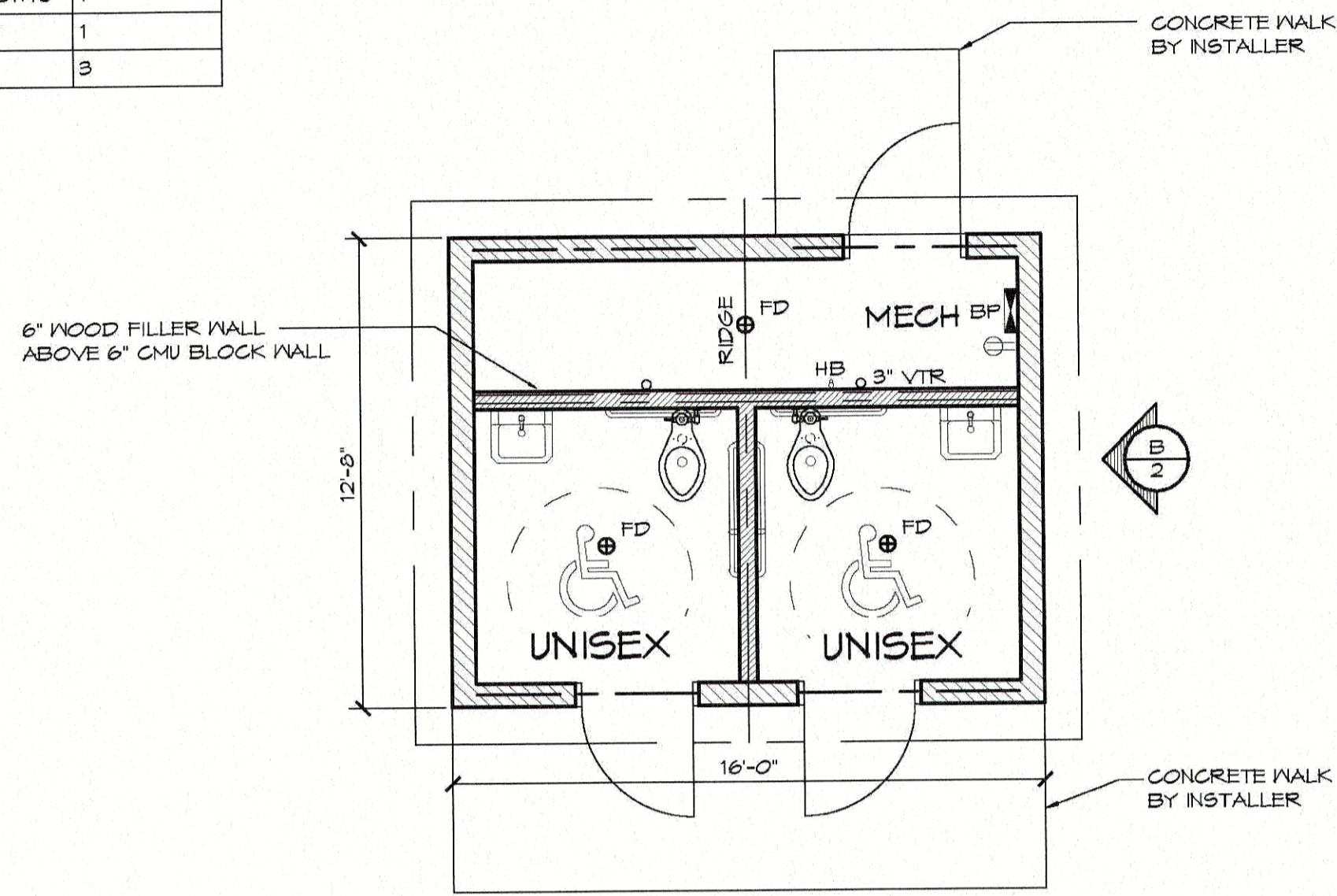


LEGEND		
SYMBOL	DESCRIPTION	AREA/ QUANTITY
---	GABLE VENT	4
==	2x6 WOOD FILLER WALL	2
---	EXTERIOR WALL LIGHTS	3
---	INTERIOR WALL LIGHTS	2
---	INTERIOR CEILING LIGHTS	1
⊕	ELECTRICAL OUTLET	1
⊙	FLOOR DRAIN	3

THESE PLAN VIEW AND ELEVATION DRAWINGS ARE A PRELIMINARY ARCHITECTURAL REPRESENTATION OF THE BUILDING. ALL DIMENSIONS, FEATURES AND COMPONENTS SHOWN ON THESE PRELIMINARY DRAWINGS MAY OR MAY NOT BE PART OF THE QUOTE. PLEASE REFER TO THE 'SCOPE OF SUPPLY AND SERVICES' LETTER PROVIDED WITH YOUR QUOTE FOR ROMTEC'S PROPOSED SCOPE OF SUPPLY.

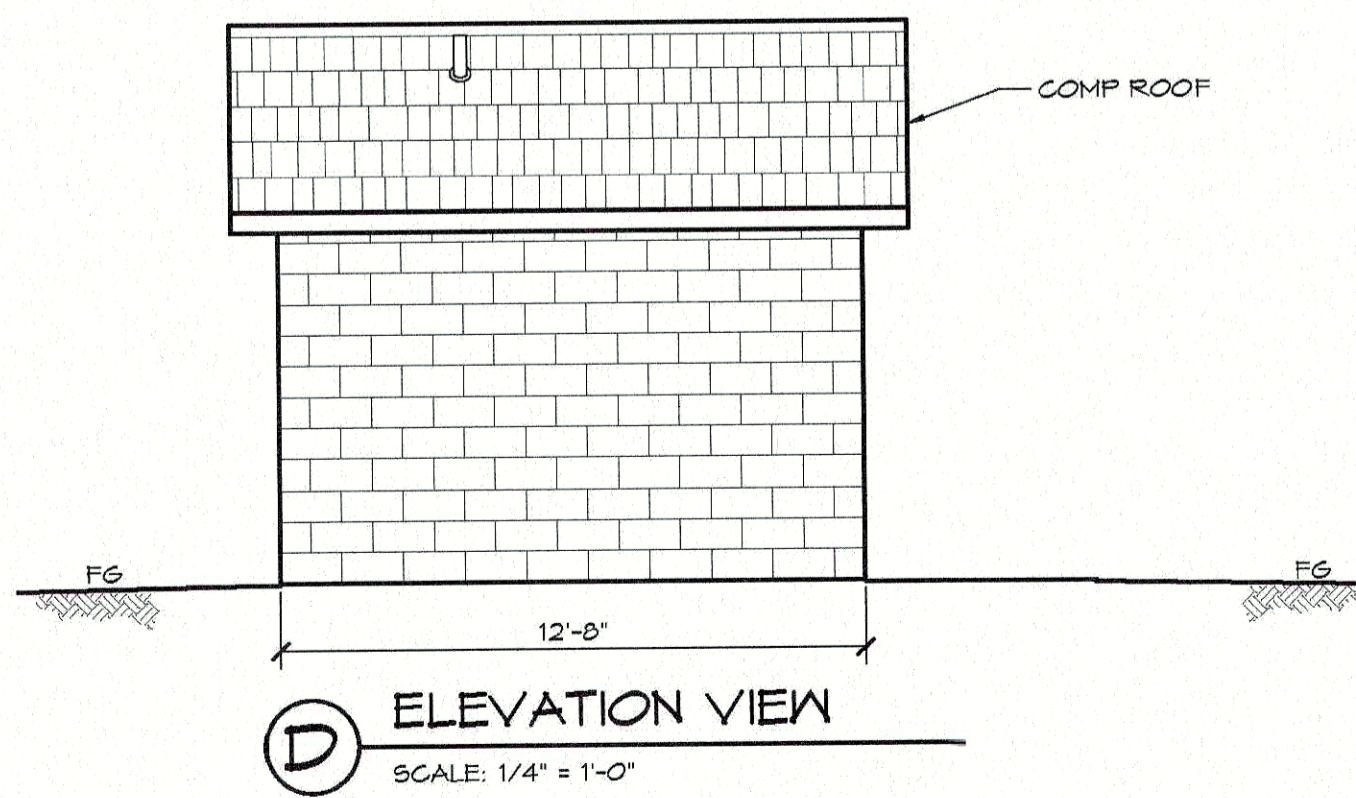
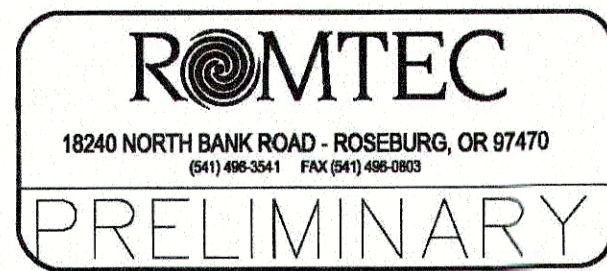
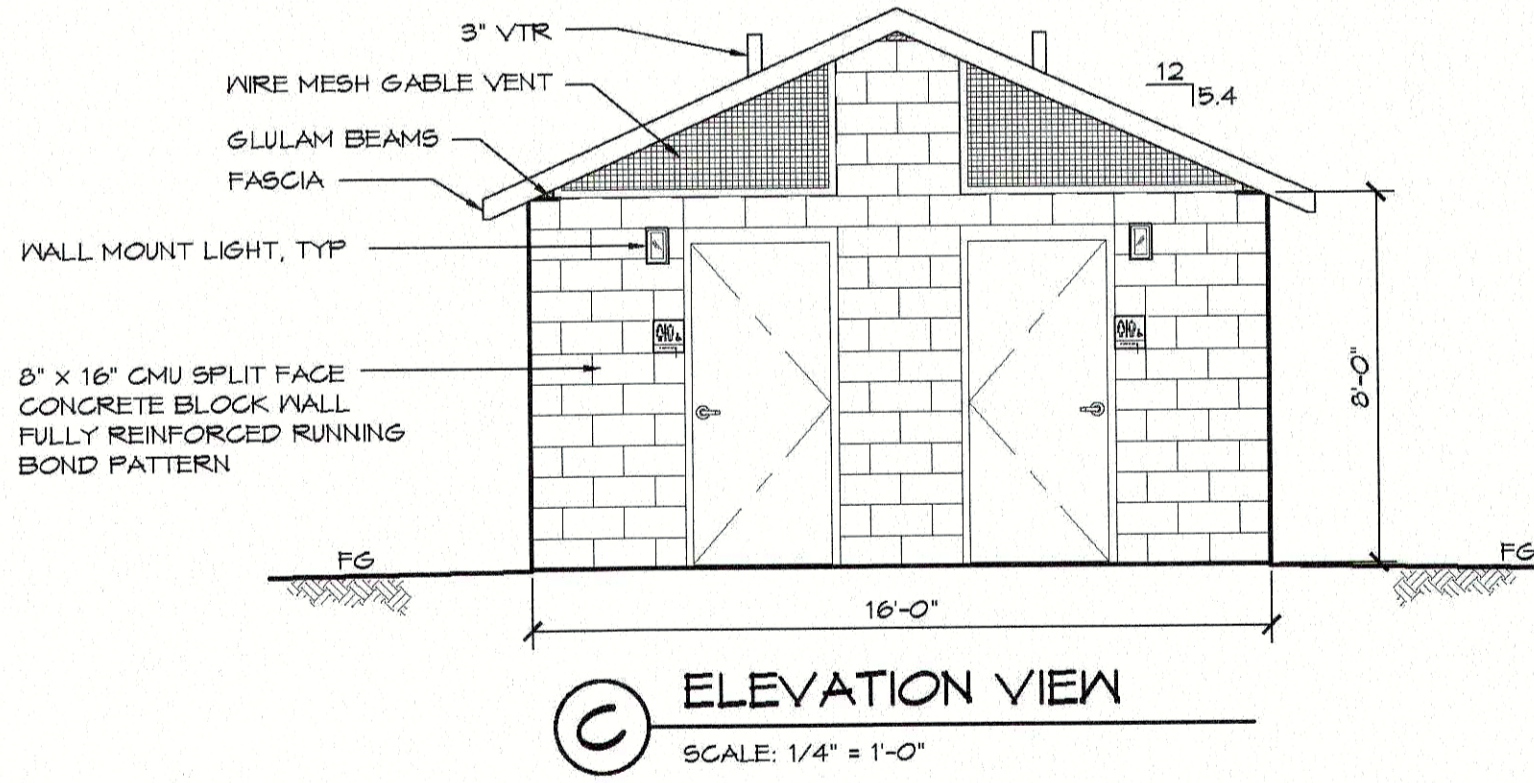
WALL TYPE SCHEDULE

- 6" REINFORCED CONCRETE MASONRY BLOCK WALL WITH MORTAR JOINTS, GROUTED SOLID ALL CELLS RUNNING BOND PATTERN.
- 6" REINFORCED CONCRETE MASONRY BLOCK WALL WITH MORTAR JOINTS, GROUTED SOLID ALL CELLS RUNNING BOND PATTERN.



1 FLOOR PLAN
SCALE: 1/4" = 1'-0"

RESTROOM FACILITY

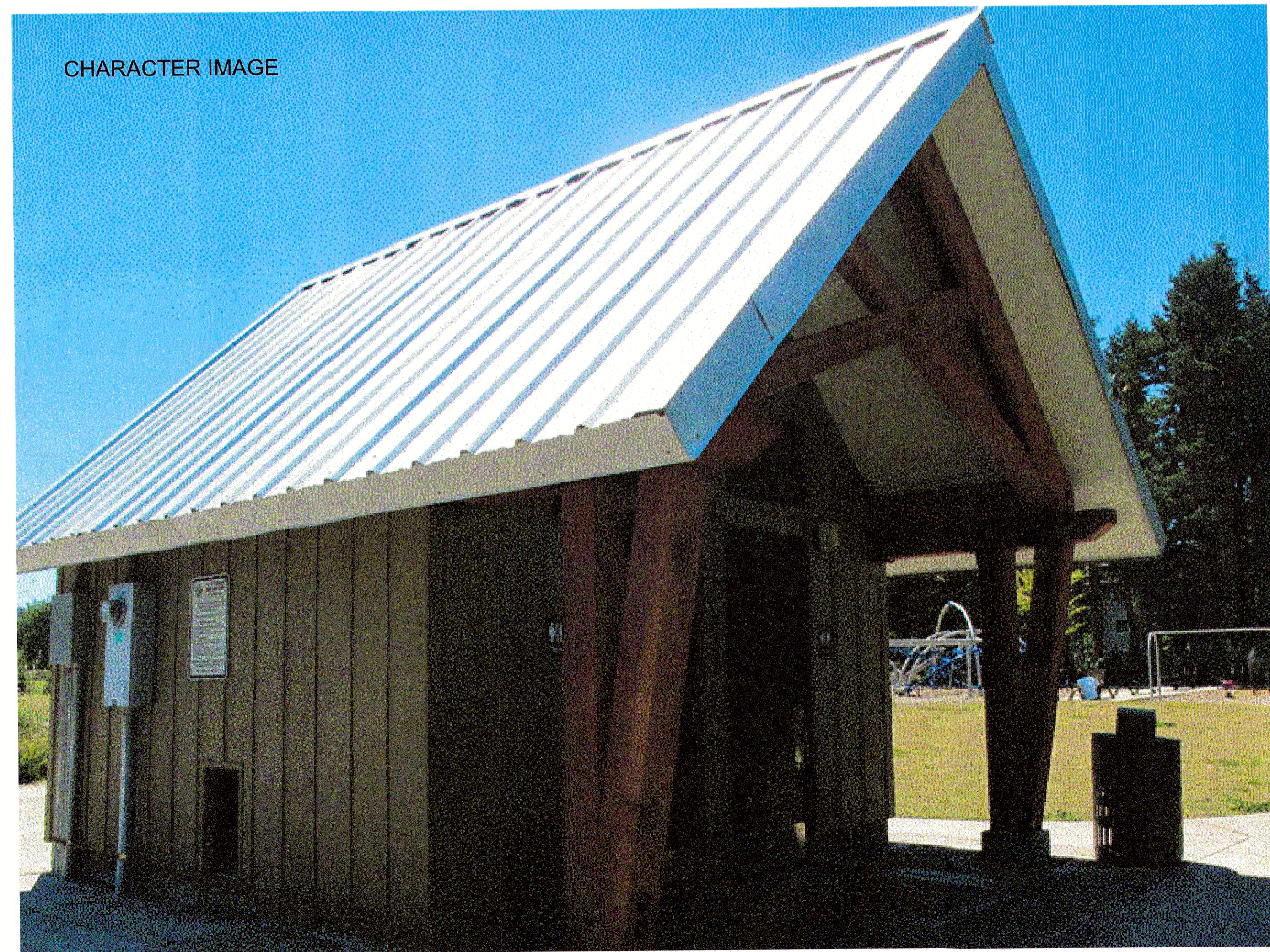


RESTROOM FACILITY

THESE PLAN VIEW AND ELEVATION DRAWINGS ARE A PRELIMINARY ARCHITECTURAL REPRESENTATION OF THE BUILDING. ALL DIMENSIONS, FEATURES AND COMPONENTS SHOWN ON THESE PRELIMINARY DRAWINGS MAY OR MAY NOT BE PART OF THE QUOTE. PLEASE REFER TO THE 'SCOPE OF SUPPLY AND SERVICES' LETTER PROVIDED WITH YOUR QUOTE FOR ROMTEC'S PROPOSED SCOPE OF SUPPLY.

THE RESTROOM FACILITY WILL CLOSELY MATCH THE NEW RESTROOM INSTALLED AT THE MOUNTAIN BROOK ELEMENTARY FIELD. THE BUILDING MATERIALS WILL BE BOARD AND BATTEN SIDING PAINTED IN A SOFT SAGE GREEN COLOR. THE FACILITY WILL HAVE A LARGE OVERHANG TO PROVIDE SHELTER AND WILL FEATURE STAINED CEDAR BEAMS AND POSTS.

CHARACTER IMAGE



GMC

2701 1st Avenue S
Birmingham, AL 35233
T 205.879.4462
GMCNETWORK.COM

ISSUE DATE

MB PLANNING COMMISSION 03.13.2020

DRAWN BY: DB
CHECKED BY: JB

CHEROKEE BEND ELEMENTARY
MULTIUSE FIELD RENOVATION
MOUNTAIN BROOK, ALABAMA

GMC Project #CBHM190084

SITE PLAN

SF1.1
Sheet 2 of 2