

Mountain Brook Cherokee Bend Elementary

Mountain Brook, AL

Lighting System

Pole / Fixture Summary						
Pole ID	Pole Height	Mtg Height	Fixture Qty	Luminaire Type	Load	Circuit
P1-P2	60'	60'	3	TLC-LED-1500	4.29 kW	A
		30'	1	CREE OSQ	0.13 kW	B
P3-P7	60'	60'	3	TLC-LED-1500	4.29 kW	A
7			23		30.29 kW	

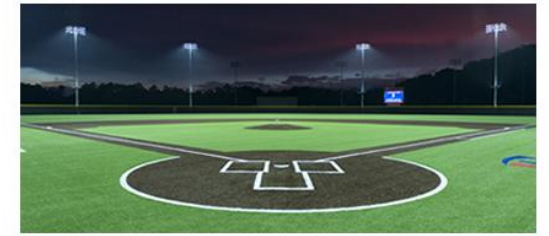
Circuit Summary			
Circuit	Description	Load	Fixture Qty
A	Multipurpose	30.03 kW	21
B	Security	0.26 kW	2

Fixture Type Summary							
Type	Source	Wattage	Lumens	L90	L80	L70	Quantity
TLC-LED-1500	LED 5700K - 75 CRI	1430W	160,000	>81,000	>81,000	>81,000	21
CREE OSQ	LED 5700K - 70 CRI	130W	16,599	--	--	--	2

Light Level Summary

Calculation Grid Summary								
Grid Name	Calculation Metric	Illumination					Circuits	Fixture Qty
		Ave	Min	Max	Max/Min	Ave/Min		
Multipurpose	Horizontal Illuminance	30.7	18	39	2.17	1.71	A	21
P1 Security	Horizontal	2	0	3	7.42		B	2
P2 Security	Horizontal	2	0	3	8.48		B	2

From Hometown to Professional



We Make It Happen®

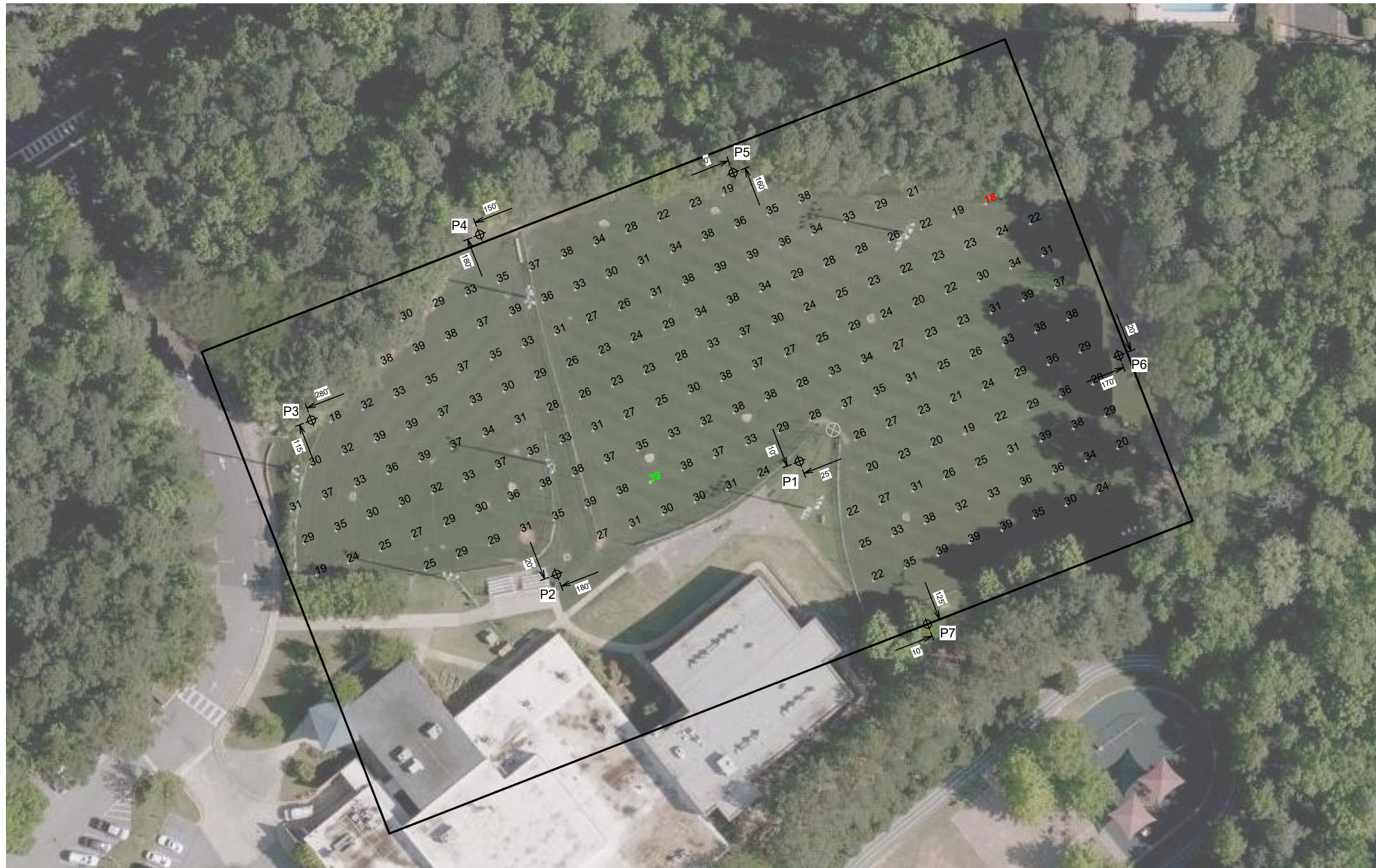
Not to be reproduced in whole or part without the written consent of Musco Sports Lighting, LLC. ©1981, 2020 Musco Sports Lighting, LLC.

EQUIPMENT LIST FOR AREAS SHOWN								
Pole			Luminaires					
QTY	LOCATION	SIZE	GRADE ELEVATION	MOUNTING HEIGHT	LUMINAIRE TYPE	QTY / POLE	THIS GRID	OTHER GRIDS
2	P1-P2	60'	-	30'	CREE OSQ	1	0	1
				60'	TLC-LED-1500	3	3	0
5	P3-P7	60'	-	60'	TLC-LED-1500	3	3	0
7	TOTALS					23	21	2

Mountain Brook Cherokee Bend Elementary
Mountain Brook, AL

GRID SUMMARY	
Name:	Multipurpose
Size:	500' x 300'
Spacing:	20.0' x 20.0'
Height:	3.0' above grade

ILLUMINATION SUMMARY			
MAINTAINED HORIZONTAL FOOTCANDLES			
Entire Grid			
Scan Average:	30.7		
Maximum:	39		
Minimum:	18		
Avg / Min:	1.70		
Max / Min:	2.17		
UG (adjacent pts):	1.87		
CU:	0.77		
No. of Points:	207		
LUMINAIRE INFORMATION			
Color / CRI:	5700K - 75 CRI		
Luminaire Output:	160,000 lumens		
No. of Luminaires:	21		
Total Load:	30.03 kW		
Lumen Maintenance			
Luminaire Type	L90 hrs	L80 hrs	L70 hrs
TLC-LED-1500	>81,000	>81,000	>81,000
Reported per TM-21-11. See luminaire datasheet for details.			

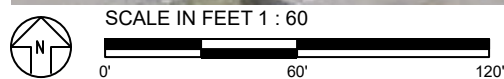


Guaranteed Performance: The ILLUMINATION described above is guaranteed per your Musco Warranty document and includes a 0.95 dirt depreciation factor.

Field Measurements: Individual field measurements may vary from computer-calculated predictions and should be taken in accordance with IESNA RP-6-15.

Electrical System Requirements: Refer to Amperage Draw Chart and/or the "Musco Control System Summary" for electrical sizing.

Installation Requirements: Results assume ± 3% nominal voltage at line side of the driver and structures located within 3 feet (1m) of design locations.



Pole location(s) ⊕ dimensions are relative to 0,0 reference point(s) ⊗



We Make It Happen.

Not to be reproduced in whole or part without the written consent of Musco Sports Lighting, LLC. ©1981, 2020 Musco Sports Lighting, LLC.

ILLUMINATION SUMMARY

EQUIPMENT LIST FOR AREAS SHOWN							
Pole				Luminaires			
QTY	LOCATION	SIZE	GRADE ELEVATION	MOUNTING HEIGHT	LUMINAIRE TYPE	QTY / POLE	THIS GRID
2	P1-P2	60'	-	30'	CREE OSQ	1	1
				60'	TLC-LED-1500	3	0
2	TOTALS					8	2

Mountain Brook Cherokee Bend Elementary
Mountain Brook, AL

GRID SUMMARY	
Name:	P2 Security
Size:	500' x 300'
Spacing:	10.0' x 10.0'
Height:	3.0' above grade

ILLUMINATION SUMMARY			
MAINTAINED HORIZONTAL FOOTCANDLES			
Entire Grid			
Scan Average:	2.0		
Maximum:	3		
Minimum:	0		
Avg / Min:	4.77		
Max / Min:	8.48		
UG (adjacent pts):	2.09		
CU:	0.29		
No. of Points:	49		
LUMINAIRE INFORMATION			
Color / CRI:	5700K - 70 CRI		
Luminaire Output:	16,599 lumens		
No. of Luminaires:	2		
Total Load:	0.26 kW		
Lumen Maintenance			
Luminaire Type	L90 hrs	L80 hrs	L70 hrs
CREE OSQ	--	--	--
Reported per TM-21-11. See luminaire datasheet for details.			

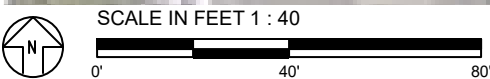


Guaranteed Performance: The ILLUMINATION described above is guaranteed per your Musco Warranty document and includes a 0.95 dirt depreciation factor.

Field Measurements: Individual field measurements may vary from computer-calculated predictions and should be taken in accordance with IESNA RP-6-15.

Electrical System Requirements: Refer to Amperage Draw Chart and/or the "Musco Control System Summary" for electrical sizing.

Installation Requirements: Results assume ± 3% nominal voltage at line side of the driver and structures located within 3 feet (1m) of design locations.



Pole location(s) ⊕ dimensions are relative to 0,0 reference point(s) ⊗



We Make It Happen.®

Not to be reproduced in whole or part without the written consent of Musco Sports Lighting, LLC. ©1981, 2020 Musco Sports Lighting, LLC.

EQUIPMENT LIST FOR AREAS SHOWN								
Pole			Luminaires					
QTY	LOCATION	SIZE	GRADE ELEVATION	MOUNTING HEIGHT	LUMINAIRE TYPE	QTY / POLE	THIS GRID	OTHER GRIDS
2	P1-P2	60'	-	30'	CREE OSQ	1	1	0
				60'	TLC-LED-1500	3	0	3
2	TOTALS					8	2	6

Mountain Brook Cherokee Bend Elementary
Mountain Brook, AL

GRID SUMMARY	
Name:	P1 Security
Size:	500' x 300'
Spacing:	10.0' x 10.0'
Height:	3.0' above grade

ILLUMINATION SUMMARY			
MAINTAINED HORIZONTAL FOOTCANDLES			
	Entire Grid		
Scan Average:	2.0		
Maximum:	3		
Minimum:	0		
Avg / Min:	4.24		
Max / Min:	7.42		
UG (adjacent pts):	2.07		
CU:	0.29		
No. of Points:	49		
LUMINAIRE INFORMATION			
Color / CRI:	5700K - 70 CRI		
Luminaire Output:	16,599 lumens		
No. of Luminaires:	2		
Total Load:	0.26 kW		
Lumen Maintenance			
Luminaire Type	L90 hrs	L80 hrs	L70 hrs
CREE OSQ	--	--	--
Reported per TM-21-11. See luminaire datasheet for details.			

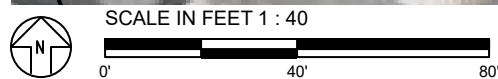


Guaranteed Performance: The ILLUMINATION described above is guaranteed per your Musco Warranty document and includes a 0.95 dirt depreciation factor.

Field Measurements: Individual field measurements may vary from computer-calculated predictions and should be taken in accordance with IESNA RP-6-15.

Electrical System Requirements: Refer to Amperage Draw Chart and/or the "Musco Control System Summary" for electrical sizing.

Installation Requirements: Results assume $\pm 3\%$ nominal voltage at line side of the driver and structures located within 3 feet (1m) of design locations.



Pole location(s) \oplus dimensions are relative to 0,0 reference point(s) \otimes



We Make It Happen.

Not to be reproduced in whole or part without the written consent of Musco Sports Lighting, LLC. ©1981, 2020 Musco Sports Lighting, LLC.

EQUIPMENT LAYOUT

INCLUDES:

· Multipurpose

Electrical System Requirements: Refer to Amperage Draw Chart and/or the "Musco Control System Summary" for electrical sizing.

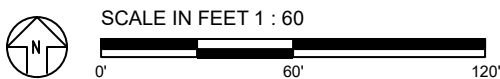
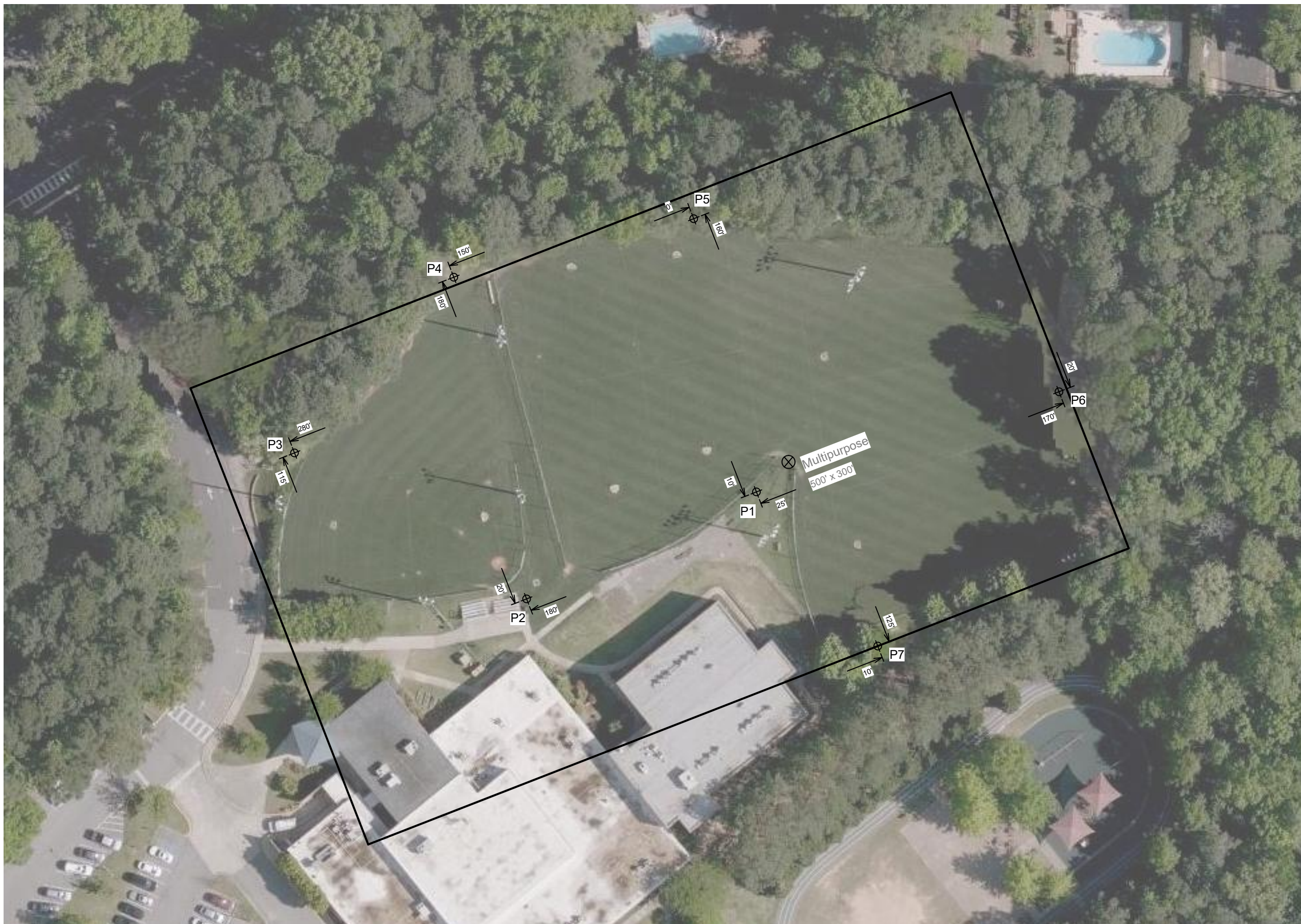
Installation Requirements: Results assume ± 3% nominal voltage at line side of the driver and structures located within 3 feet (1m) of design locations.

EQUIPMENT LIST FOR AREAS SHOWN

QTY	Pole		Luminaires			QTY / POLE
	LOCATION	SIZE	GRADE ELEVATION	MOUNTING HEIGHT	LUMINAIRE TYPE	
2	P1-P2	60'	-	30' 60'	CREE OSQ TLC-LED-1500	1 3
5	P3-P7	60'	-	60'	TLC-LED-1500	3
7	TOTALS					23

SINGLE LUMINAIRE AMPERAGE DRAW CHART

Ballast Specifications (.90 min power factor)	Line Amperage Per Luminaire (max draw)						
	208 (60)	220 (60)	240 (60)	277 (60)	347 (60)	380 (60)	480 (60)
Single Phase Voltage	208 (60)	220 (60)	240 (60)	277 (60)	347 (60)	380 (60)	480 (60)
TLC-LED-1500	8.5	8.1	7.4	6.4	5.1	4.7	3.7
Cree OSQ	-	-	-	-	0.4	-	0.3



Pole location(s) Ⓢ dimensions are relative to 0,0 reference point(s) ⊗



We Make It Happen.

Not to be reproduced in whole or part without the written consent of Musco Sports Lighting, LLC. ©1981, 2020 Musco Sports Lighting, LLC.