

**PRE-MEETING AGENDA
MOUNTAIN BROOK CITY COUNCIL**

**CITY HALL COUNCIL CHAMBER (A108)
56 CHURCH STREET
MOUNTAIN BROOK, AL 35213**

APRIL 11 2022, 6:00 P.M.

As a matter of convenience, members of the public are invited to listen, observe and participate in public meetings by Internet video conference. Presenters and others interested in a particular matter for discussion are encouraged to attend the meeting in-person. The City is not responsible for technical issues that may occur that interfere with the virtual meeting. The City Council, at its sole discretion, may proceed with its in-person work session regardless of whether virtual attendees can hear and/or observe the proceedings. The City intends to make the meeting available by way of the Zoom app (re: Meeting ID 801-559-1126, password 04112022). Unvaccinated in-person attendees are asked to mask.

1. Mountain Brook Village Circle project-Tyler Slaten (See attached information. This item could be added to the formal agenda or to the proposed FY-2023 budget.)
2. Conditional Use request for the Travel Studio to be located at 2012 Cahaba Road in English Village-Dana Hazen (See attached information. This item could be added to the formal agenda.)
3. Painted crosswalks for Church Street-Sam Gaston (See attached information. This item could be added to the proposed FY-2023 budget.)
4. Downstream impact study for the Canterbury/Surrey/Overhill Road drainage project-Walter Schoel of Schoel Engineering
5. Municipal Court Judges appointments-Heather Richards (See attached information. This item could be added to the formal agenda.)
6. Executive Session

March 7, 2022

City of Mountain Brook

Attn: Ronnie Vaughn



Re: Demo/Concrete Curb&Gutter Project

Wright Construction Company proposes to furnish all labor, materials, and equipment necessary to complete the scope of work described below at the above referenced project:

Scope of Work to include:

- *demo approx. 120SF existing curb/gutter and remove spoils from site.
- *form/place/finish approx. 100LF new concrete curb&gutter (*with integral color*) to replace temporary barricades.
- *remove existing mulch and asphalt below mulch to prepare for new grass.
- *install new topsoil to prepare for new sod.
- *leave work area in pristine condition upon completion.

TOTAL PROJECT COST: \$8,500



100LF C/G



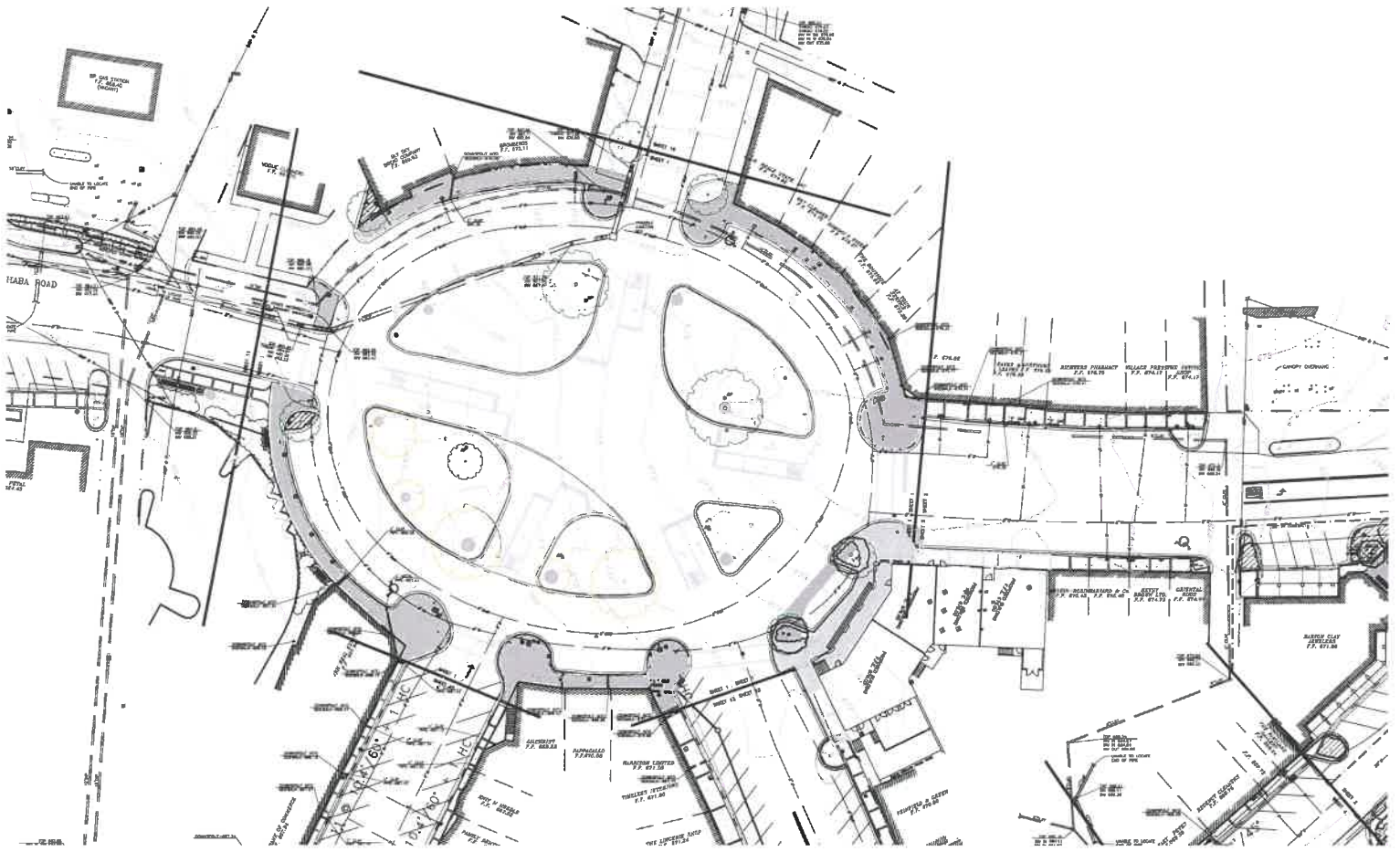
demo 120LF C/G



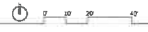
Exclusions: Permits, Engineering, Testing, Private Locate, Utility Relocation and/or repair.

Thank you for the opportunity to bid on this project. We look forward to working with you guys again.

LANDON DITTO
Lead Estimator/Manager



Project Title



CITY OF MOUNTAIN BROOK



Dana O. Hazen, AICP
Director of Planning, Building & Sustainability
56 Church Street
Mountain Brook, Alabama 35213
Telephone: 205/802-3816
Fax: 205.879.6913
hazend@mtnbrook.org
www.mtnbrook.org

DATE: April 11, 2022

TO: Mayor, City Council & City Manager

FROM: Dana Hazen, City Planner

RE: Travel Studio – 2012 Cahaba Road – English Village

The Travel Studio is seeking approval for a space in English Village (bottom 1/2 of the previous Billy's site). The proposed site is zoned Local Business, and is non-conforming with regard to on-site parking. While a portion of the space will be used for retail sales of travel items (such as luggage) the remaining provision of travel services requires council approval of a conditional use.

Please see attached letter of proposed operational characteristics. Note that the proposed number of employees at a peak hour is seven, with peak client activity estimated at four-five. There is limited on-site parking (one space); and the applicant anticipates that employees and clients will primarily utilize the public parking lots on Fairway Drive.

The zoning ordinance requires council approval of service uses as a conditional use, and states that any proposed conditional use will be reviewed as to the following:

- Whether the use would disparately impact public parking in the area;
- Whether vehicular or pedestrian circulation would be impacted by the use;
- Whether the use is compatible with surrounding existing uses;
- Whether the hours of operation or peak traffic times would impact existing uses.

RESOLUTION NO. 2022-

BE IT RESOLVED by the City Council of the City of Mountain Brook, Alabama that the City Council hereby approves the conditional service use application submitted by Anne Liles (Travel Studio) for property at 2012 Cahaba Road.

ADOPTED: This 11th day of April, 2022.

Virginia C. Smith, Council President

APPROVED: This 11th day of April, 2022.

Stewart Welch III, Mayor

CERTIFICATION

I, Heather Richards, City Clerk of the City of Mountain Brook, Alabama hereby certify the above to be a true and correct copy of a resolution adopted by the City Council of the City of Mountain Brook at its regular meeting held on April 11, 2022, as same appears in the minutes of record of said meeting.

Heather Richards, City Clerk

Impressed preformed thermoplastic crosswalks and traffic calming surfaces for asphalt

TrafficPatternsXD[®] preformed thermoplastic is an extremely durable material that incorporates a unique aggregate-reinforced formula with enhanced wear resistance. The result is a traffic-tough crosswalk that provides traditional bricklike aesthetics built to last.

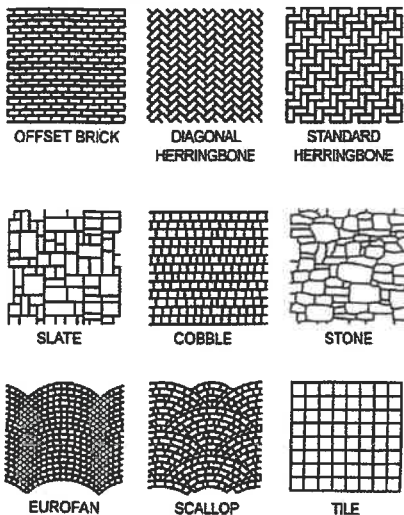
PERFORMANCE-BASED FEATURES AND BENEFITS

- Designed for extreme use and wear in high-traffic crosswalks and traffic calming surfaces
- Engineered for a robust application system and enhanced durability at 150 mils
- Enhanced performance in all climates
- Applied to high-quality, stable asphalt with minimal substrate impact
- Fast installation and minimal traffic downtime
- High skid/slip resistant for safety – as material wears, new anti-skid elements are exposed
- ADA compliant – pedestrian and wheelchair friendly surface
- Eliminates the maintenance and safety concerns of loose pavers
- Made at Ennis-Flint's manufacturing facility which is ISO 9001:2015 certified for the design, development and manufacturing of preformed thermoplastic
- Markings designed for quality, value, and long-term performance
- Anti-skid elements added at time of manufacturing for optimized application at the jobsite

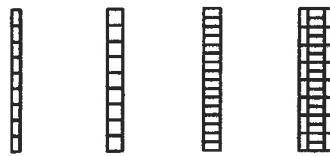
TrafficPatternsXD thermoplastic material is installed by a network of certified applicators so you can be confident that your design intentions will manifest on the job site. The 2 ft. x 2 ft. sheets of material are positioned on the non-stamped, prepared asphalt surface. The material is heated to allow proper embedment of the anti-skid elements. A specialized grid gently stamps a pattern into the material and just into the top layer of the asphalt.



STANDARD PATTERNS



STANDARD BORDERS



STANDARD COLORS



PREMIUM COLORS





TrafficScapes®

Surface Systems

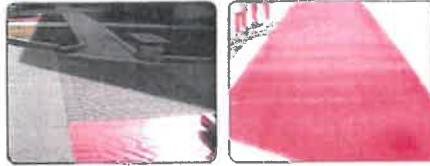
CROSSWALKS • MEDIANS • ISLANDS • ROUNDABOUTS • ENTRYWAYS • LOGOS

TrafficScapes® preformed thermoplastic pavement marking materials portfolio is engineered for durability, safety, and aesthetics for the streetscape and traffic calming market. Each product offers its own unique application and performance approach to streetscape projects where shared roadway safety and aesthetic appeal need to work in conjunction.

TrafficPatterns®
Interconnected Surface System



TrafficPatternsLT®
Overlay Surface System



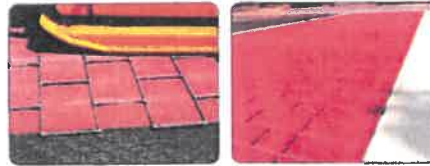
DecoMark®
Surface Signs



TrafficPatternsGF®
Grout-Free Surface System



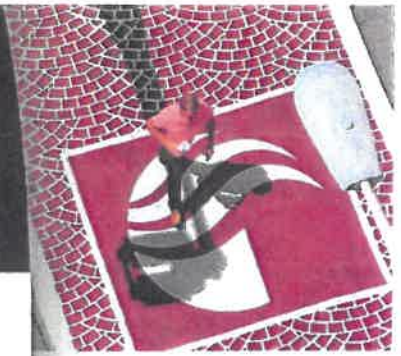
TrafficPatternsXD®
Impressed Surface System



DuraTherm®
Inlaid Surface System



When used on public roadways and private properties open to public travel, decorative crosswalks require proper demarcation with white linear boundaries according to the Manual on Uniform Traffic Control Devices (MUTCD).



Interconnected, surface-applied preformed thermoplastic crosswalks and streetscape surfaces for asphalt and concrete

TrafficPatterns® preformed thermoplastic is a cost-effective alternative to brick and stone pavers. It has a traditional look and is surface applied, making it virtually maintenance free. The pattern and color combinations of the interconnected sheets allow designers the flexibility to create the ideal crosswalk or surface pattern that complements the overall streetscape design.

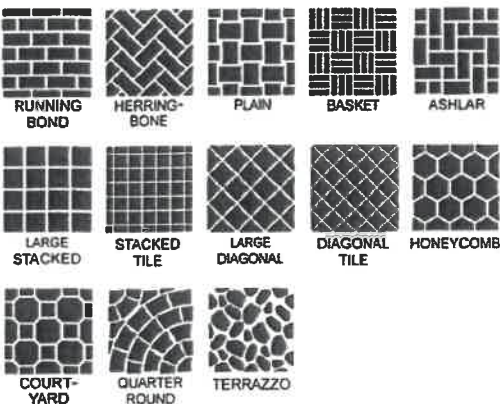
PERFORMANCE-BASED FEATURES AND BENEFITS

- Engineered as heavy-duty intersection grade pavement marking material with enhanced durability
- Interconnected sheets of material with 125-mil thickness
- High skid/slip resistant for safety. As material wears, new anti-skid elements are exposed
- Does not alter substrate or require stamping templates or grids
- Open to traffic within minutes after application
- ADA compliant - pedestrian and wheelchair friendly surface
- Eliminates the maintenance and safety concerns of loose pavers
- Made at Ennis-Flint's manufacturing facility which is ISO 9001:2015 certified for the design, development and manufacturing of preformed thermoplastic
- Anti-skid elements added at time of manufacturing for optimized application at the jobsite

TrafficPatterns preformed thermoplastic material application is simple with a large infrared heater or a propane heat torch and does not require expensive capital equipment, customized tools, templates or grids. The 2' x 2' sheets of interconnected material can easily be lifted and positioned onto an asphalt or concrete surface prior to heating. Border segments can be added for design variability.



STANDARD PATTERNS (2'x2' Sheets)



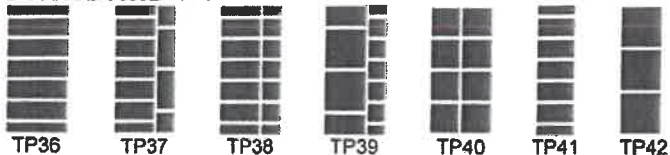
STANDARD COLORS



PREMIUM COLORS



STANDARD BORDERS



All designs patented.



TrafficScapes®

Surface Systems

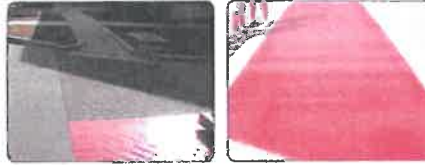
CROSSWALKS • MEDIANS • ISLANDS • ROUNDABOUTS • ENTRYWAYS • LOGOS

TrafficScapes' preformed thermoplastic pavement marking materials portfolio is engineered for durability, safety, and aesthetics for the streetscape and traffic calming market. Each product offers its own unique application and performance approach to streetscape projects where shared roadway safety and aesthetic appeal need to work in conjunction.

TrafficPatterns®
Interconnected Surface System



TrafficPatternsLT®
Overlay Surface System



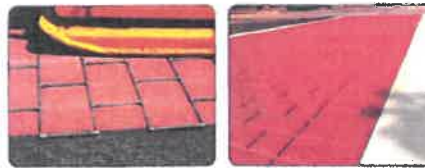
DecoMark®
Surface Signs



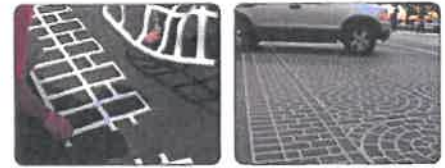
TrafficPatternsGF®
Grout-Free Surface System



TrafficPatternsXD®
Impressed Surface System



DuraTherm®
Inlaid Surface System



When used on public roadways and private properties open to public travel, decorative crosswalks require proper demarcation with white linear boundaries according to the Manual on Uniform Traffic Control Devices (MUTCD).

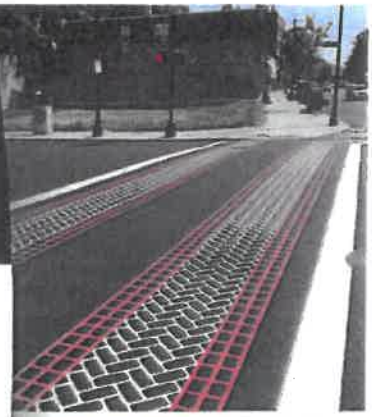
Inlaid Preformed Thermoplastic Crosswalks and Traffic Calming Surfaces for Asphalt

DuraTherm[®] preformed thermoplastic is specially designed to be inlaid into an imprinted asphalt surface and thermally bonded using specialized infrared heaters. Engineered to lie slightly below the asphalt surface, DuraTherm material is protected from wear, promoting effective service life.

PERFORMANCE-BASED FEATURES AND BENEFITS

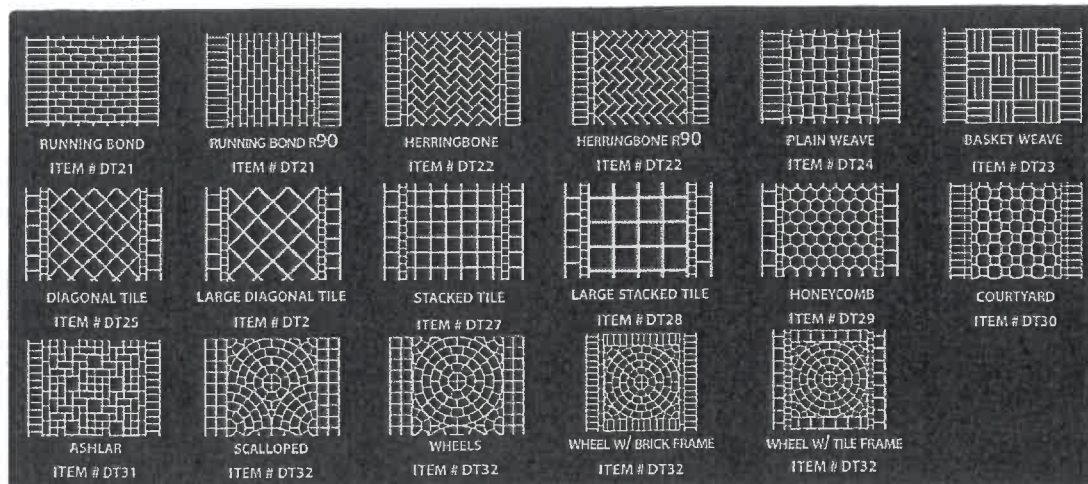
- High skid/slip resistant for safety. As material wears, new anti-skid elements are exposed
- "Grout lines" of 90 mils inlaid to sit slightly below the surface
- Enhanced durability provides optimum wear in adverse conditions; snowplow friendly
- ADA compliant - pedestrian and wheelchair friendly surface
- Design flexibility with standard and customizable colors and patterns
- Eliminates the maintenance and safety concerns of loose pavers
- Made at Ennis-Flint's manufacturing facility which is ISO 9001:2015 certified for the design, development and manufacturing of preformed thermoplastic
- Anti-skid elements added at the time of manufacturing for optimized application at the jobsite

DuraTherm[®] preformed thermoplastic is installed by a network of certified applicators so you can be confident that your design intentions will manifest on the job site. A specialized pavement heater softens the existing asphalt. Templates are pressed into the surface to create the imprinted pattern. Precut sections of DuraTherm thermoplastic material are set into these impressions. The specialized heater is used again to bond the material to the asphalt surface.



Custom patterns are available requiring a minimum purchase.

STANDARD PATTERNS



STANDARD COLORS



PREMIUM COLORS



Premium colors are subject to upcharge and may require a minimum purchase.

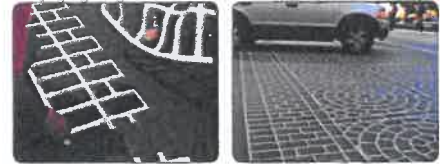
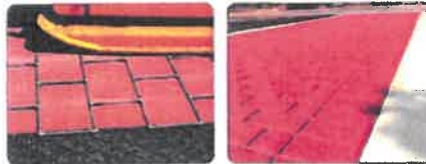
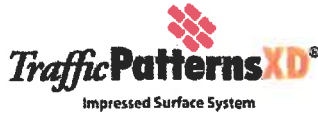
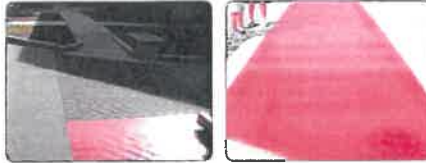


TrafficScapes®

Surface Systems

CROSSWALKS • MEDIANS • ISLANDS • ROUNDABOUTS • ENTRYWAYS • LOGOS

TrafficScapes® preformed thermoplastic pavement marking materials portfolio is engineered for durability, safety, and aesthetics for the streetscape and traffic calming market. Each product offers its own unique application and performance approach to streetscape projects where shared roadway safety and aesthetic appeal need to work in conjunction.



When used on public roadways and private properties open to public travel, decorative crosswalks require proper demarcation with white linear boundaries according to the Manual on Uniform Traffic Control Devices (MUTCD).

Sam Gaston

From: Richard Caudle <richard@skipperinc.com> on behalf of Richard Caudle
Sent: Monday, April 04, 2022 9:00 AM
To: gastons@mtnbrook.org
Subject: RE: FW: Traffic Scopes - Ennis-Flint

Below is a photo of decorative crosswalks we have done with Ennis-Flint materials in Guntersville which have stood up well over time.



From: Heather Richards <richardsh@mtnbrook.org>
Sent: Friday, April 1, 2022 1:09 PM
To: Richard Caudle <richard@skipperinc.com>
Subject: Fwd: FW: Traffic Scopes - Ennis-Flint

Richard,

I believe this email was intended for you. Please see the email below from Sam.

Heather Richards
City Clerk
City of Mountain Brook
P.O. Box 130009
Mountain Brook, AL 35213
Direct - 205-802-3823
Facsimile - 205-874-0611

----- Forwarded message -----

From: Sam Gaston <gastons@mtnbrook.org>
Date: Fri, Apr 1, 2022 at 11:39 AM



Date: April 6, 2022

Re: Canterbury/Surrey Drainage Improvement
City of Mountain Brook, Alabama
Hydrologic Study Summary Report-Draft

Schoel has been tasked with developing improvements to portions of the stormwater infrastructure in the Canterbury Road and Surrey Road areas. A three phased approach has been developed and is presented for consideration. A summary of the benefits and impacts are discussed.

Overview of the Stormwater System

The system begins between Surrey Rd and Montevallo Rd about 1000' north of Overhill Road and ends at the confluence of Watkins Brook near Petticoat Ln. The primary stormwater system, and much of the flooding in the study area, is generally located on private property and along the rear lot lines of adjoining properties.

Schoel has conducted a hydrological study by developing a detailed model along the length of system described above. Survey data was gathered for all visible storm pipes, structures, and open channel areas. Rainfall data from a recent storm, May 4, 2021, was captured and used in this modeling effort. The May 4, 2021 event saw 6.4-inches fall in a six hour period and just over 7 inches in total. This is equivalent to a 100-year, 6-hour event. During this event, significant flooding occurred in the area. One location, in particular, in the rear of the lot at 2700 Canterbury Rd, estimates of the peak water elevations were made based on observations. The modeling effort here agreed very well with the observations, therefore, the storm event formed the basis for comparison for each of the project phases.

Summary of Stormwater Improvements

The project consists of three principal phases, to be constructed in the order in which they are presented here.

Lower Canterbury

This work involves the installation of a new 6'x4' box culvert in Canterbury Rd. The improvements begin in the open channel located along the lot lines between 2611 and 2615 Canterbury Rd traveling northeast along Canterbury Rd and stopping near 2700

Canterbury Rd. This phase will include some additional surface collection structures on Canterbury Rd. The purpose of this phase is to consolidate the pipe network in Canterbury Rd, while increasing the capacity of the system such that future phases can take place.

Estimated Cost: \$1,384,000

Upper Canterbury

The work from the Lower Canterbury Phase is continued with a new 6'x4' box culvert through the lot at 2640 Canterbury Rd and along the rear lot lines in a northeast direction until it reaches an existing open channel behind 2708 Canterbury Rd. This phase will replace an existing undersized pipe and abandon another. The primary purpose of this phase is increase capacity and significantly reduce the flooding through the Canterbury Lots. This work would also accommodate the final future phase.

Estimated Cost \$1,108,000.

Overhill Road/Surrey Road

This work begins at the rear corner of 2800 and 2812 Overhill Rd and extends northeast across Overhill Rd, along the rear lot lines between Montevallo Rd and Surrey Road. Near 2844 Surrey Rd, the pipe will extent to Surrey Rd and some additional surface collection features will be added. The new pipe will transition between an arch, a rectangular and round pipe through this area to accommodate for the lack of adequate cover over the pipe. This phase will replace some existing undersized pipes that conflict the new pipe but will also leave in place an existing 36" pipe which originates behind 2801 Montevallo Rd and is believed to reenter the system on Canterbury Rd. It is anticipated that this phase will increase the primary capacity such that the flooding originating from this pipe network will be significantly reduced.

Estimated Cost \$1,452,000.

Results of the Study

The Lower Canterbury phase is not believed to cause an appreciable increase in peak flows or peak water surface elevations downstream of the work area, based on the downstream analysis. This phase could reduce the flooding for the lots along Canterbury Rd and specifically below the finish floor of 2700 Canterbury Rd.

The Upper Canterbury Phase may result in a 3-8% percent increase in flows with very minor increases in peak water surface elevations between Canterbury Rd and Cambridge

Rd and slightly greater increases in the channel downstream of Cambridge Rd. It is believed that this phase will eliminate the flooding observed on the lots along Canterbury Rd.

The Overhill/Surrey Road Phase may cause a 6-13% increase in peak flows downstream of the work area. This would result in increases in water surface elevations between 3" and 10" in the channel downstream of Cambridge Road.

The following tables summarize the peak flows and peak water surface elevations downstream of the project work area for the May 4, 2021 storm event and the potential changes due to the proposed drainage improvements.

Phase	Peak Flows (cfs)	
	Open Channel between Canterbury and Cambridge	Open Channel Downstream of Cambridge Dr
Existing Condition	208	246
Lower Canterbury	217	245
Upper Canterbury	226	255
Overhill/Surrey	236	260

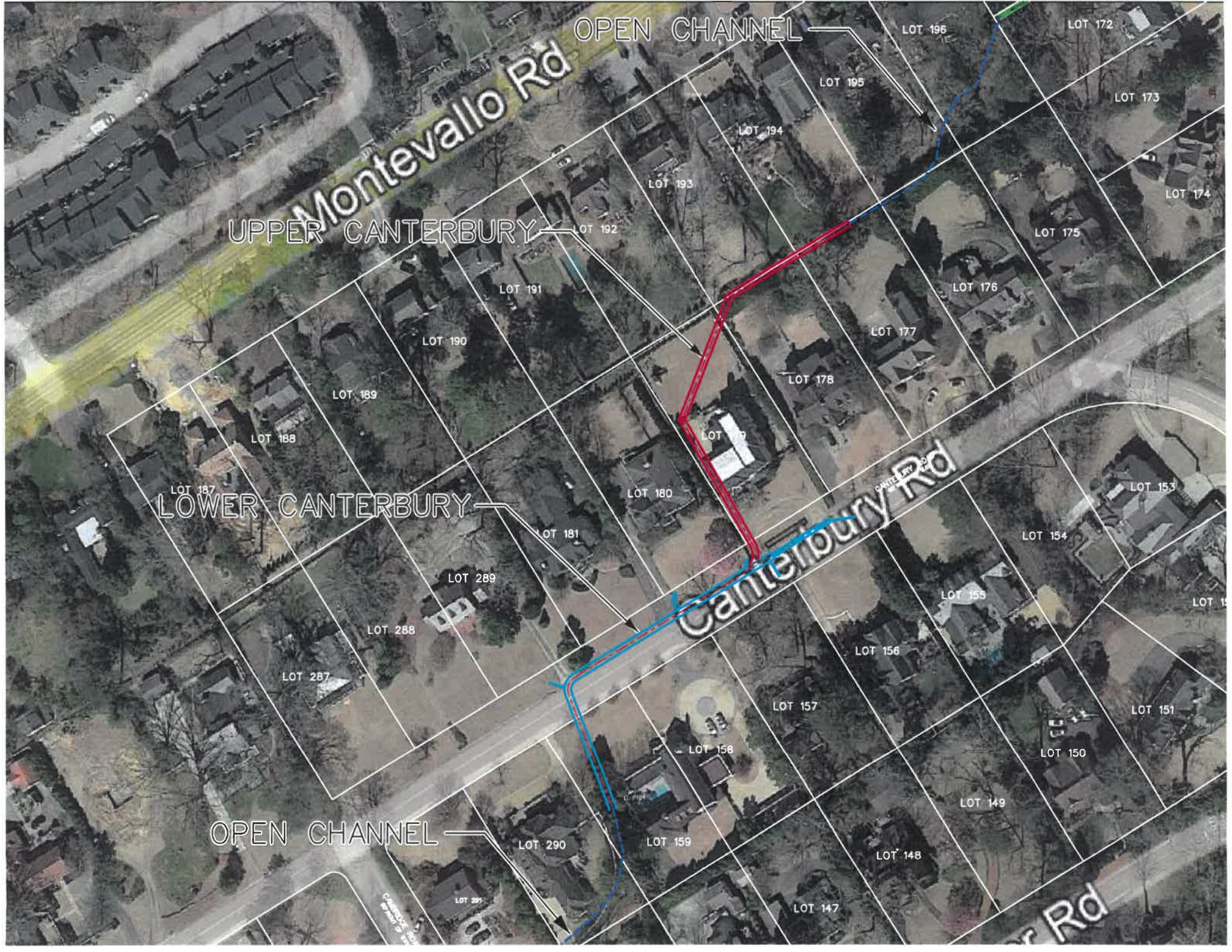
Phase	Peak Change in Water Surface Elevation (feet)	
	Open Channel between Canterbury and Cambridge	Open Channel Downstream of Cambridge Dr
Existing Condition	--	--
Lower Canterbury	+0.06'	+/-0.01'
Upper Canterbury	+0.14'	+0.80'
Overhill/Surrey	+0.23'	+0.86'

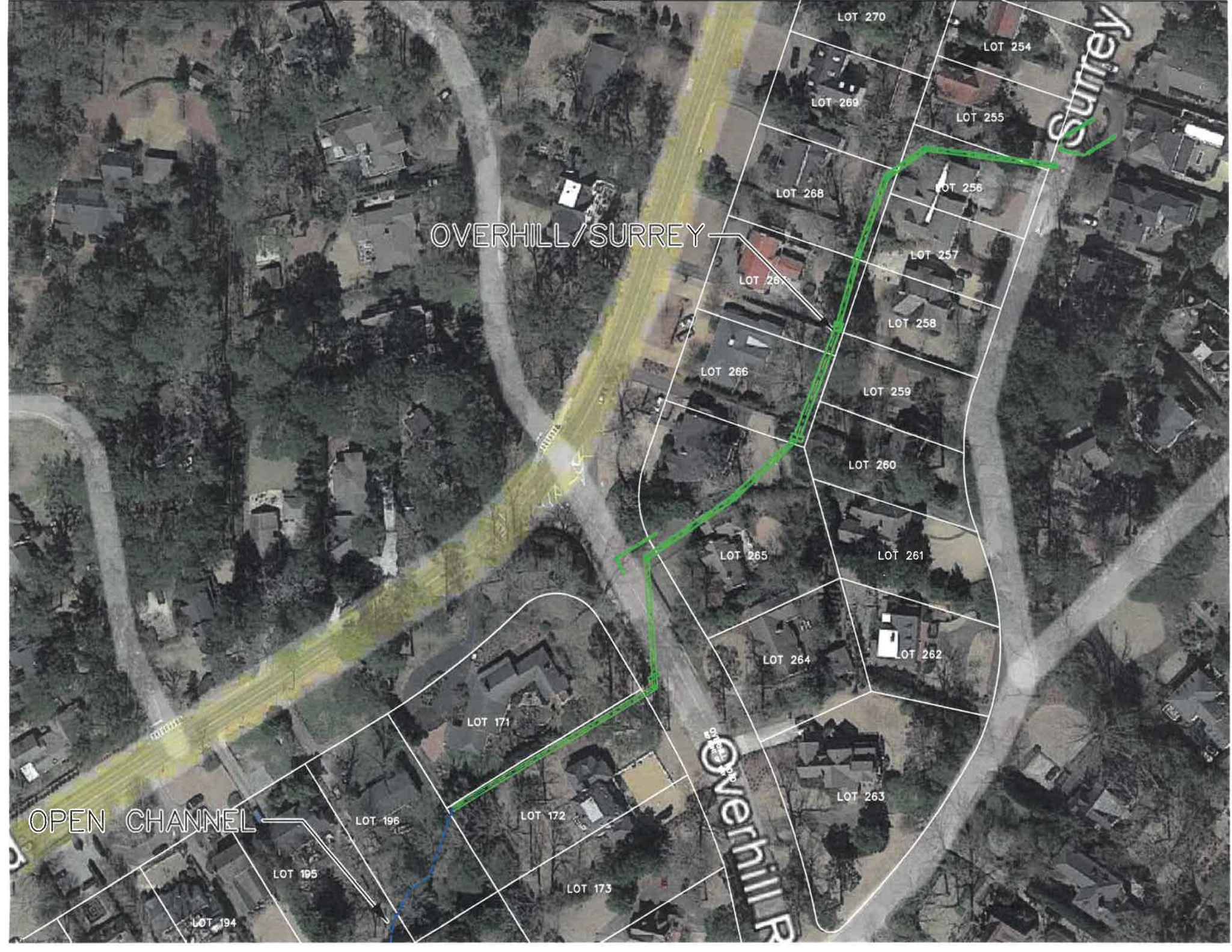
Summary

The Lower Canterbury phase could be constructed without causing any downstream impacts as demonstrated in the downstream analysis. The Lower Canterbury improvements would mitigate the flooding for the lots along Canterbury and prevent flooding of structures for the events similar to the May 4, 2021 event.

It should be noted that the lots along Heathermoor that abut the channel downstream of Cambridge Rd currently experience flooding. The backyards of the lots along Heathermoor are significantly lower than the lots along Canterbury on the opposite side of the channel. A wall has been constructed along the top of bank on the Heathermoor side to contain the floodwaters to the channel. However, the Heathermoor lots have small collection systems in the backyards which connect to the channel. This allows water to flow from the channel and flood the backyards during large storm events.

Schoel recommends that a preliminary design of improvements to the channel downstream of Cambridge Rd be performed prior to consideration of the Upper Canterbury and the Overhill/Surrey Rd Phases. To offset potential increases in the depth of flooding to the lots along Heathermoor Rd, the improvements identified in the preliminary design will need to be implemented concurrent with the Upper Canterbury and Overhill/Surrey Rd phases. Also, the Upper Canterbury phase should be constructed before the Overhill/Surrey Rd phase, otherwise all benefits from the Lower Canterbury Rd improvements are negated. This is necessary because the Overhill/Surrey Rd improvements will increase flows to the Lower Canterbury area.





OPEN CHANNEL

OVERHILL/SURREY

Surrey

Overhill R

LOT 270

LOT 254

LOT 269

LOT 255

LOT 268

LOT 256

LOT 257

LOT 267

LOT 258

LOT 266

LOT 259

LOT 260

LOT 265

LOT 261

LOT 264

LOT 262

LOT 171

LOT 263

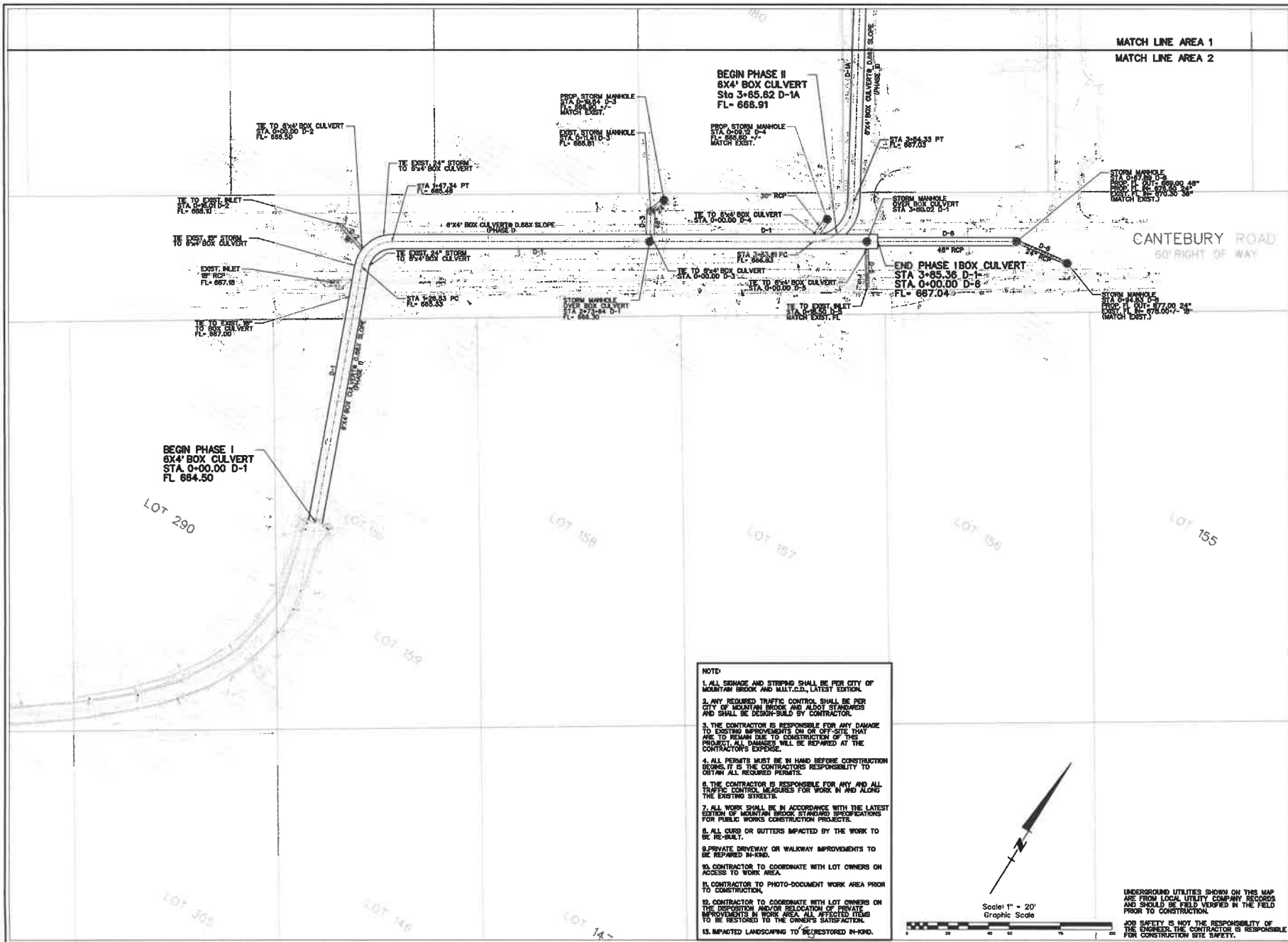
LOT 196

LOT 172

LOT 173

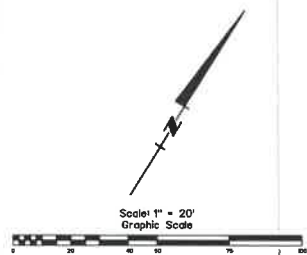
LOT 195

LOT 194



NOTE

1. ALL SIGNAGE AND STOPPING SHALL BE PER CITY OF MOUNTAIN BROOK AND MUTI.C.D., LATEST EDITION.
2. ANY REQUIRED TRAFFIC CONTROL SHALL BE PER CITY OF MOUNTAIN BROOK AND ALDOT STANDARDS AND SHALL BE DESIGN-BUILD BY CONTRACTOR.
3. THE CONTRACTOR IS RESPONSIBLE FOR ANY DAMAGE TO EXISTING IMPROVEMENTS ON OR OFF-SITE THAT ARE TO REMAIN DUE TO CONSTRUCTION OF THIS PROJECT. ALL DAMAGES WILL BE REPAIRED AT THE CONTRACTOR'S EXPENSE.
4. ALL PERMITS MUST BE IN HAND BEFORE CONSTRUCTION BEGINS. IT IS THE CONTRACTOR'S RESPONSIBILITY TO OBTAIN ALL REQUIRED PERMITS.
5. THE CONTRACTOR IS RESPONSIBLE FOR ANY AND ALL TRAFFIC CONTROL MEASURES FOR WORK IN AND ALONG THE EXISTING STREET.
6. ALL CURB OR OUTTERS IMPACTED BY THE WORK TO BE RE-BUILT.
7. ALL WORK SHALL BE IN ACCORDANCE WITH THE LATEST EDITION OF MOUNTAIN BROOK STANDARD SPECIFICATIONS FOR PUBLIC WORKS CONSTRUCTION PROJECTS.
8. ALL CURB OR OUTTERS IMPACTED BY THE WORK TO BE RE-BUILT.
9. PRIVATE DRIVEWAY OR WALKWAY IMPROVEMENTS TO BE REPAIRED IN-KIND.
10. CONTRACTOR TO COORDINATE WITH LOT OWNERS ON ACCESS TO WORK AREA.
11. CONTRACTOR TO PHOTO-DOCUMENT WORK AREA PRIOR TO CONSTRUCTION.
12. CONTRACTOR TO COORDINATE WITH LOT OWNERS ON THE REPOSITION AND/OR RELOCATION OF PRIVATE IMPROVEMENTS IN WORK AREA. ALL AFFECTED ITEMS TO BE RESTORED TO THE OWNERS SATISFACTION.
13. IMPACTED LANDSCAPING TO BE RESTORED IN-KIND.



UNDERGROUND UTILITIES SHOWN ON THIS MAP ARE FROM LOCAL UTILITY COMPANY RECORDS AND SHOULD BE FIELD VERIFIED IN THE FIELD PRIOR TO CONSTRUCTION.
 JOB SAFETY IS NOT THE RESPONSIBILITY OF THE OWNER. THE CONTRACTOR IS RESPONSIBLE FOR CONSTRUCTION SITE SAFETY.

SCHAEFER
 Civil Engineering Land Surveying Landscape Architecture
 Environmental Water Resources
 1800 25th Avenue South, Suite 2000, Mountain Brook, Alabama 35222
 Birmingham, Alabama 35222 Phone: 205.988.7200
 205.988.8888 Fax: 205.988.7201
 www.schaefer.com

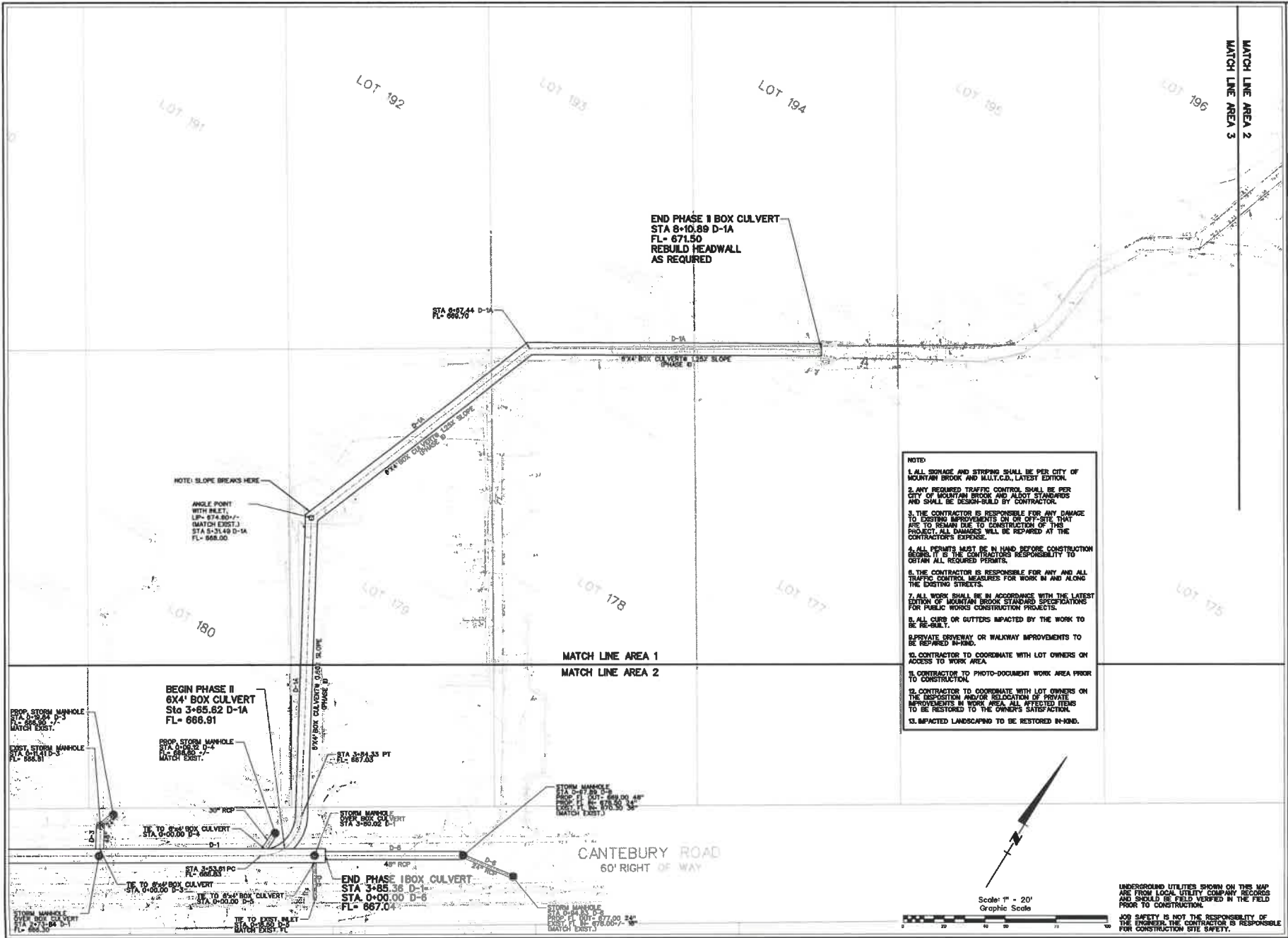
**CANTERBURY ROAD
 DRAINAGE IMPROVEMENTS
 PRELIMINARY DESIGN
 MOUNTAIN BROOK, ALABAMA**

DRAWING SET:
 PREL. DESIGN 10/18/21

**STORM
 DRAINAGE
 PLAN AREA 1**

DRAWN BY: SPS
 CHECKED BY: WS II
 FILE NAME: 21275-GP1

g:\11275-C&D\Design

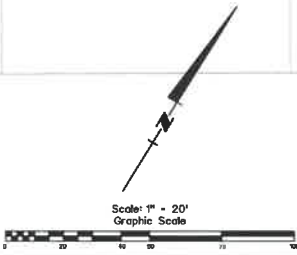


NOTE: SLOPE BREAKS HERE

ANGLE POINT WITH B.C.T.
 LP= 674.80 +/-
 STA 6+31.69 D-1A
 FL= 668.00

NOTE:

1. ALL SIGNAGE AND STRIPING SHALL BE PER CITY OF MOUNTAIN BROOK AND MULT.C.D., LATEST EDITION.
2. ANY REQUIRED TRAFFIC CONTROL SHALL BE PER CITY OF MOUNTAIN BROOK AND ADOT STANDARDS AND SHALL BE DESIGN-BUILD BY CONTRACTOR.
3. THE CONTRACTOR IS RESPONSIBLE FOR ANY DAMAGE TO EXISTING IMPROVEMENTS ON OR OFF-SITE THAT ARE TO REMAIN DUE TO CONSTRUCTION OF THIS PROJECT. ALL DAMAGES WILL BE REPAIRED AT THE CONTRACTOR'S EXPENSE.
4. ALL PERMITS MUST BE IN HAND BEFORE CONSTRUCTION BEGINS. IT IS THE CONTRACTOR'S RESPONSIBILITY TO OBTAIN ALL REQUIRED PERMITS.
5. THE CONTRACTOR IS RESPONSIBLE FOR ANY AND ALL TRAFFIC CONTROL MEASURES FOR WORK IN AND ALONG THE EXISTING STREETS.
6. ALL WORK SHALL BE IN ACCORDANCE WITH THE LATEST EDITION OF MOUNTAIN BROOK STANDARD SPECIFICATIONS FOR PUBLIC WORKS CONSTRUCTION PROJECTS.
7. ALL CURB OR GUTTERS IMPACTED BY THE WORK TO BE RE-BUILT.
8. PRIVATE DRIVEWAY OR WALKWAY IMPROVEMENTS TO BE REPAIRED IN-KIND.
9. CONTRACTOR TO COORDINATE WITH LOT OWNERS ON ACCESS TO WORK AREA.
10. CONTRACTOR TO PHOTO-DOCUMENT WORK AREA PRIOR TO CONSTRUCTION.
11. CONTRACTOR TO COORDINATE WITH LOT OWNERS ON THE DISPOSITION AND/OR RELOCATION OF PRIVATE IMPROVEMENTS IN WORK AREA. ALL AFFECTED ITEMS TO BE RESTORED TO THE OWNER'S SATISFACTION.
12. IMPACTED LANDSCAPING TO BE RESTORED IN-KIND.



UNDERGROUND UTILITIES SHOWN ON THIS MAP ARE FROM LOCAL UTILITY COMPANY RECORDS AND SHOULD BE FIELD VERIFIED IN THE FIELD PRIOR TO CONSTRUCTION.

JOB SAFETY IS NOT THE RESPONSIBILITY OF THE ENGINEER. THE CONTRACTOR IS RESPONSIBLE FOR CONSTRUCTION SITE SAFETY.

10/1/2018 10:00 AM
 User: Rasmussen
 Laser Scanning/Modeling
 Environment

SCHAEEL

18000 S.W. 15th Street, Suite 200
 Miramar, FL 33185
 Phone: 305.441.2100
 Fax: 305.441.2101
 www.schaeel.com

CANTERBURY ROAD
 DRAINAGE IMPROVEMENTS
 PRELIMINARY DESIGN
 MOUNTAIN BROOK, ALABAMA

DRAWING SET:
PREL DESIGN 10/18/21

REVISIONS:

STORM DRAINAGE PLAN AREA 2

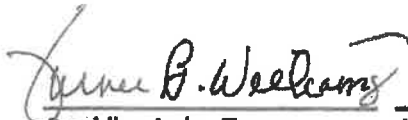
DRAWN BY: JSS
CHECKED BY: WS II
FILE NAME: 21278-GP2

11 OF 16

MEMO REGARDING PROPOSED

ORDINANCE 2121

- After serving as a municipal judge for the City of Mountain Brook for almost 20 years, Presiding Judge Turner Williams would like to transition to supernumerary judge.
- In this new role, Judge Williams will continue to serve Mountain Brook as a judge on an as needed basis and will be available to the extent his vast experience with the Mountain Brook court is needed for a particular case or issue in the future.
- K.C. Halrston will assume the responsibilities of the Presiding Judge.
- With the creation of the supernumerary position for Judge Williams, the second judge position is no longer necessary.
- The one judge, one supernumerary staffing is consistent with how the other over-the-mountain courts operate: Homewood, Vestavia, Hoover, Trussville and many others.
- Having one primary judge instead of two judges promotes consistency and fairness to defendants and is easier for the city to implement.
- Accordingly, the Mountain Brook Municipal Court respectfully requests that the City Council adopt Ordinance No. 2121.


Presiding Judge Turner
Williams


Judge K.C. Halrston


City Clerk Heather Richards

RESOLUTION NO. 2022-

BE IT RESOLVED by the City Council of the City of Mountain Brook, Alabama, that K.C. Hairston is hereby appointed as Presiding Judge, from municipal Judge, of the Mountain Brook Municipal Court of the City of Mountain Brook with the term of office to end January 25, 2024.

ADOPTED: This 11th day of April, 2022.

Council President

APPROVED: This 11th day of April, 2022.

Mayor

CERTIFICATION

I, Heather Richards, City Clerk of the City of Mountain Brook, Alabama hereby certify the above to be a true and correct copy of a resolution adopted by the City Council of the City of Mountain Brook at its meeting held on April 11, 2022, as same appears in the minutes or record of said meeting.

City Clerk

OATH OF OFFICE (RESOLUTION NO. ____)

STATE OF ALABAMA

JEFFERSON COUNTY

CITY OF MOUNTAIN BROOK

I, K.C. Hairston, do solemnly swear that I will administer justice without respect to persons, and do equal right to the poor and to the rich, and that I will faithfully and impartially discharge and perform all the duties incumbent upon me as Presiding Judge under the Constitution and laws of the United States. So help me God.

K. C. Hairston

Sworn to and subscribed before me this 11th day of April, 2022.

Stewart Welch, Mayor
City of Mountain Brook

RESOLUTION NO. 2022-

BE IT RESOLVED by the City Council of the City of Mountain Brook, Alabama, that Turner Williams is hereby appointed as supernumerary, from Presiding Judge, of the Mountain Brook Municipal Court of the City of Mountain Brook with the term of office to end April 13, 2024.

ADOPTED: This 11th day of April, 2022.

Council President

APPROVED: This 11th day of April, 2022.

Mayor

CERTIFICATION

I, Heather Richards, City Clerk of the City of Mountain Brook, Alabama hereby certify the above to be a true and correct copy of a resolution adopted by the City Council of the City of Mountain Brook at its meeting held on April 11, 2022, as same appears in the minutes or record of said meeting.

City Clerk

ORDINANCE NO. 2121

**AN ORDINANCE AMENDING SECTION 30-1, 30-3 (a), (b) & (c) AND SECTION 30-4(a) & (b)
OF THE CITY CODE – ESTABLISHED,
ESTABLISHED, TIME AND PLACE OF HOLDING COURT AND MUNICIPAL JUDGES**

BE IT ORDAINED by the City Council of the City of Mountain Brook, Alabama, that Section 30-3(a) of the City Code is hereby amended as follows:

1. “Sec. 30-1. Established.

There is hereby established a municipal court for the city pursuant to the provisions of Code of Ala. 1975, title 12, ch. 14 Code of Ala. 1975, § 12-14-1 et seq.. ~~The municipal court of the city shall consist of two divisions; division A and division B.~~

2. “Sec. 30-3. - Time and place of holding court.

(a) The municipal court of the city shall hold court commencing at 3:00 p.m. on Wednesday of each week, except the fifth Wednesday in each month or a week containing a holiday, in the council chamber of city hall and at such other times as ~~a municipal~~the presiding judge may continue or set a case. If approved by ~~a municipal~~the presiding judge, court may be rescheduled to address an irresolvable conflict, an unforeseen circumstance, or inclement weather.

~~(b) The municipal judge assigned to division A of the municipal court shall hold court on the first and third Wednesdays of each month. The municipal judge assigned to division B of the municipal court shall hold court on the second and fourth Wednesdays of each month. Nothing in this section shall prevent a judge assigned to one division of the municipal court from sitting for the judge assigned to the other division of the municipal court.~~

(b) It shall be the duty and responsibility of ~~each municipal~~the presiding judge to hold court on those dates required by subsection ~~(b)~~(a) of this section ~~for the division to which he is assigned~~, or to make satisfactory arrangements with the ~~municipal judge assigned to the other division of the municipal court~~supernumerary to hold court for him in his absence.

3. “Sec. 30-4. – Municipal judges.

(a) *Appointment; terms; qualifications; vacancies; oath of office.* The municipal court shall consist of ~~two municipal~~ one presiding judges and one supernumerary.

(b) *Compensation.* The salary of ~~a municipal~~the presiding judge and supernumerary of the city shall be as determined by the city council from time to time.

4. Repealer. All ordinances or parts of ordinances heretofore adopted by the City Council of the City of Mountain Brook, Alabama that are inconsistent with the provisions of this ordinance are hereby expressly repealed.

5. Severability. If any part, section or subdivision of this ordinance shall be held unconstitutional or invalid for any reason, such holding shall not be construed to invalidate or impair the remainder of this ordinance, which shall continue in full force and effect notwithstanding such holding.

6. Effective Date. This ordinance shall become effective immediately upon adoption and publication as provided by law.

ADOPTED: This 11th day of April, 2022.

Council President

APPROVED: This 11th day of April, 2022.

Mayor

CERTIFICATION

I, Heather Richards, City Clerk of the City of Mountain Brook, Alabama, hereby certify the above to be a true and correct copy of an ordinance adopted by the City Council of the City of Mountain Brook, Alabama, as its meeting held on March 11, 2022, as same appears in the minutes of record of said meeting, and published by posting copies thereof on March 12, 2022, at the following public places, which copies remained posted for five (5) days as required by law.

City Hall, 56 Church Street
Gilchrist Pharmacy, 2850 Cahaba Road

Overton Park, 3020 Overton Road
Cahaba River Walk, 3503 Overton Road

City Clerk