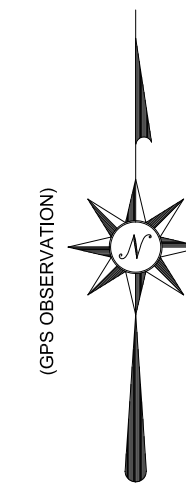
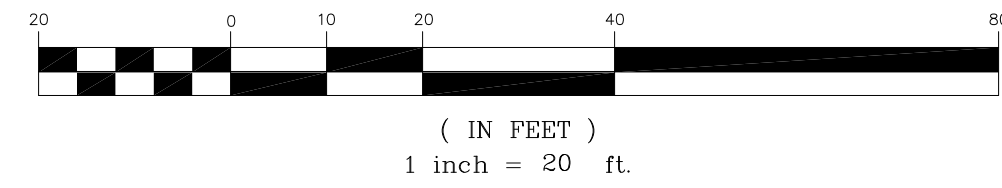


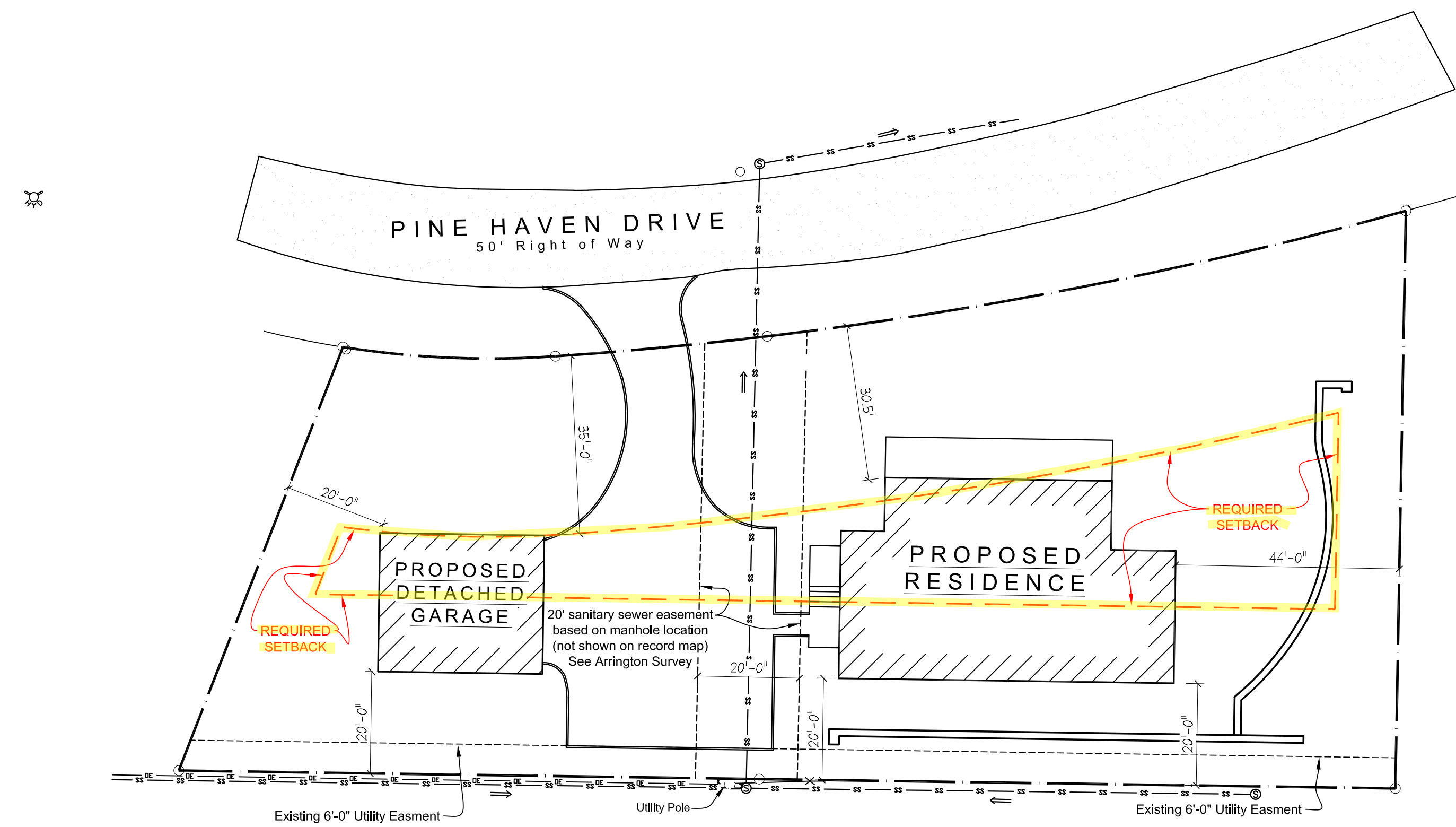
BOUNDARY & TOPOGRAPHIC SURVEY

2929 PINE HAVEN DRIVE
MOUNTAIN BROOK, ALABAMA

GRAPHIC SCALE



L E G E N D			
◆	BENCHMARK	— DE —	OVERHEAD ELECTRIC
•	EXISTING SPOT ELEVATION	— W —	WATER LINE
○	CONTROL POINT	— G —	GAS LINE
⊕	UTILITY POLE	— X —	CHAIN LINK FENCE
⊗	WATER METER	— O —	WOOD FENCE
⊙	GAS METER	—	MAJOR CONTOURS
○	CORNER MONUMENT	—	MINOR CONTOURS
⊠	AC	—	WALL
		—	ASPHALT
		—	CONCRETE
		—	GRAVEL
		—	BRICK
		—	COVERED WALK/CANOPY



PROPOSED SITE PLAN DRAWN BY:
HENRY SPROTT LONG & ASSOCIATES, INC.
BASED ON ARRINGTON ENGINEERING SITE PLAN

PROPOSED SITE PLAN

SCALE : 1" = 20'-0"

Revisions

PRELIMINARY NOT FOR CONSTRUCTION 11-21-22	A RESIDENCE FOR MR. & MRS. ELLIOTT MILLS MOUNTAIN BROOK, ALABAMA				S1 of —
	Henry Sprot Long & Associates, Inc. ARCHITECTS 3016 Clairmont Avenue Birmingham, Alabama Phone: 205-323-4564				
	Drawn by	Checked by	Date	Comm. No.	
MAW	--	--,--,--	3600		