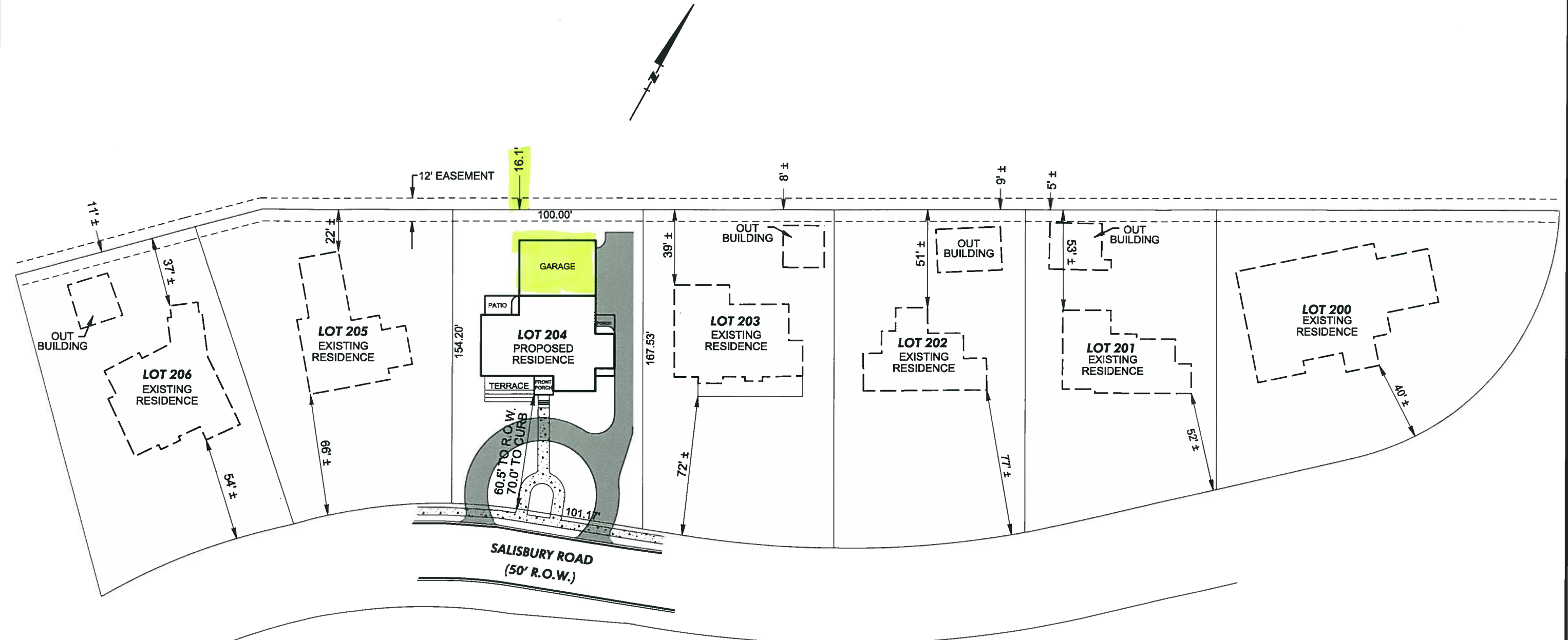


Alabama Engineering Co., Inc.  
2 Office Park Circle, Suite 11  
Birmingham, Alabama 35223  
Phone: (205) 803-2161  
Fax: (205) 803-2162

3062 SALISBURY ROAD  
MOUNTAIN BROOK, AL  
AUGUST 15, 2014 1"=50'



*Other properties & rear setbacks along Salisbury*

DIMENSIONS FOR EXISTING HOUSES ARE FROM JEFFERSON COUNTY GIS DATA AND SHOULD BE CONSIDERED APPROXIMATE