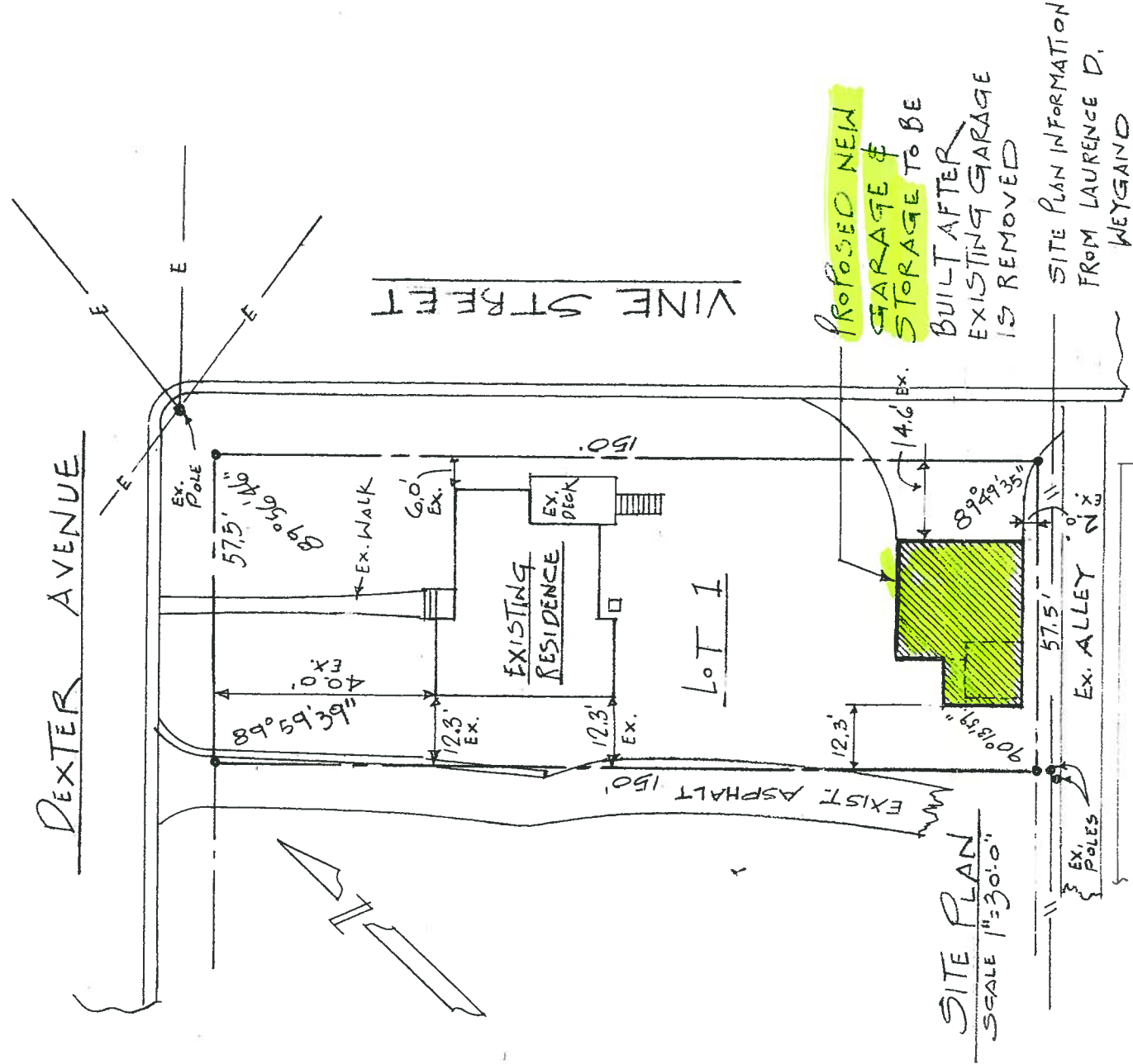


4095



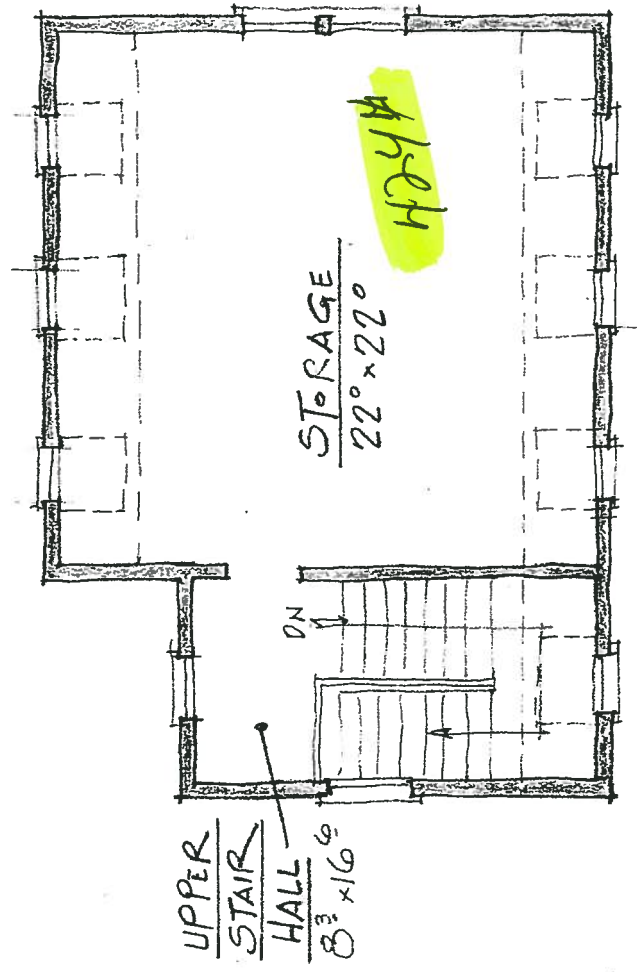
LOT N:1, BLOCK 25, CRESTLINE HEIGHTS
 AS RECORDED IN MAP VOLUME 7, PAGE 16
 IN THE OFFICE OF THE JUDGE OF PROBATE,
 JEFFERSON COUNTY, ALABAMA.

ALTERATIONS & ADDITIONS TO
 THE RESIDENCE OF

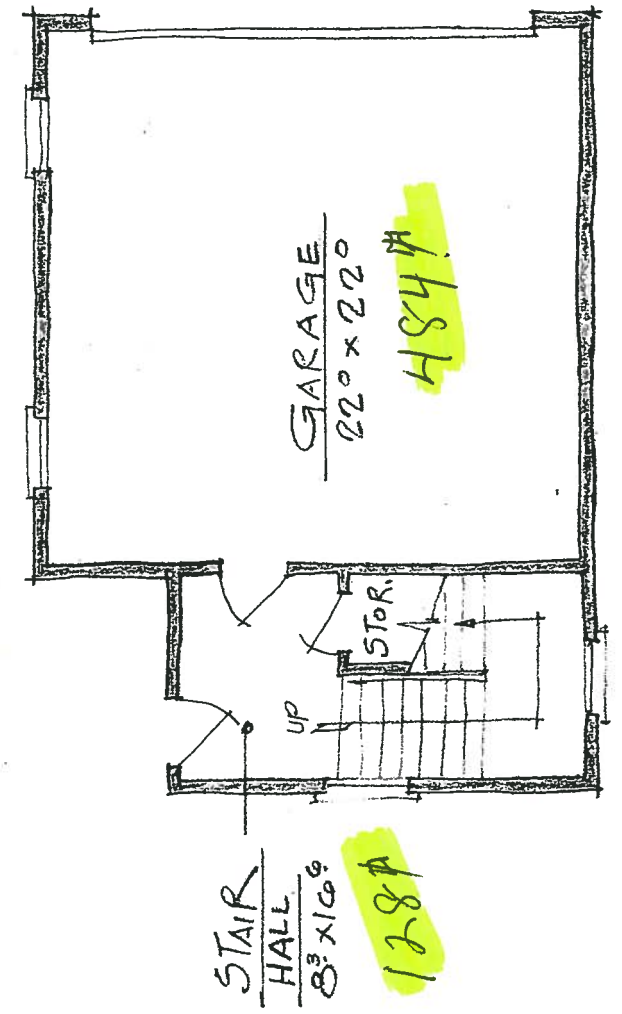
MRS. SUSAN PITTS
 MOUNTAIN BROOK, ALABAMA

HENRY SPROTT LONG & ASSOCIATED ARCHITECTS
 3400
 4-16-13

PROPOSED



UPPER LEVEL SCALE 1/8"=1'-0"



LOWER LEVEL SCALE 1/8"=1'-0"

A GARAGE / STORAGE FOR
MRS. SUSAN PITTS
 MOUNTAIN BROOK, ALABAMA
 COMM. # 3400 4-17-2013
HENRY SPROTT LONG & ASSOCIATES ARCHITECTS

PROPOSED